



# Demographic and Income Comparison Profile

Mallard Crossing Shopping Cent  
Location  
Rings: 1, 3, 5 mile radii

Prepared by Esri  
Latitude: 42.00132  
Longitude: -88.04432

	1 mile	3 miles	5 miles
<b>Census 2010 Summary</b>			
Population	13,915	78,810	244,772
Households	5,212	31,734	94,025
Families	3,666	21,132	64,102
Average Household Size	2.65	2.47	2.59
Owner Occupied Housing Units	4,023	24,469	67,909
Renter Occupied Housing Units	1,189	7,265	26,116
Median Age	41.5	42.0	38.3
<b>2016 Summary</b>			
Population	13,627	79,793	248,091
Households	5,119	32,218	95,452
Families	3,579	21,269	64,434
Average Household Size	2.64	2.46	2.58
Owner Occupied Housing Units	3,882	24,203	66,711
Renter Occupied Housing Units	1,237	8,015	28,742
Median Age	42.9	43.4	39.4
Median Household Income	\$84,471	\$76,890	\$69,271
Average Household Income	\$101,955	\$96,025	\$87,821
<b>2021 Summary</b>			
Population	13,493	80,668	251,205
Households	5,069	32,592	96,679
Families	3,533	21,424	64,943
Average Household Size	2.64	2.46	2.58
Owner Occupied Housing Units	3,845	24,436	67,316
Renter Occupied Housing Units	1,224	8,156	29,362
Median Age	43.9	44.1	40.2
Median Household Income	\$97,049	\$85,555	\$77,273
Average Household Income	\$110,987	\$105,107	\$95,259
<b>Trends: 2016-2021 Annual Rate</b>			
Population	-0.20%	0.22%	0.25%
Households	-0.20%	0.23%	0.26%
Families	-0.26%	0.15%	0.16%
Owner Households	-0.19%	0.19%	0.18%
Median Household Income	2.82%	2.16%	2.21%

Source: U.S. Census Bureau, Census 2010 Summary File 1. Esri forecasts for 2016 and 2021.



# Demographic and Income Comparison Profile

Mallard Crossing Shopping Cent  
 Location  
 Rings: 1, 3, 5 mile radii

Prepared by Esri  
 Latitude: 42.00132  
 Longitude: -88.04432

2016 Households by Income	1 mile		3 miles		5 miles	
	Number	Percent	Number	Percent	Number	Percent
<\$15,000	235	4.6%	1,806	5.6%	5,892	6.2%
\$15,000 - \$24,999	395	7.7%	2,194	6.8%	6,685	7.0%
\$25,000 - \$34,999	267	5.2%	1,904	5.9%	7,197	7.5%
\$35,000 - \$49,999	553	10.8%	3,759	11.7%	12,467	13.1%
\$50,000 - \$74,999	836	16.3%	5,938	18.4%	18,644	19.5%
\$75,000 - \$99,999	618	12.1%	5,007	15.5%	14,713	15.4%
\$100,000 - \$149,999	1,233	24.1%	6,347	19.7%	17,164	18.0%
\$150,000 - \$199,999	590	11.5%	2,959	9.2%	7,433	7.8%
\$200,000+	393	7.7%	2,303	7.1%	5,256	5.5%
Median Household Income	\$84,471		\$76,890		\$69,271	
Average Household Income	\$101,955		\$96,025		\$87,821	
Per Capita Income	\$39,463		\$39,188		\$33,956	

2021 Households by Income	1 mile		3 miles		5 miles	
	Number	Percent	Number	Percent	Number	Percent
<\$15,000	235	4.6%	1,788	5.5%	5,929	6.1%
\$15,000 - \$24,999	351	6.9%	2,038	6.3%	6,279	6.5%
\$25,000 - \$34,999	343	6.8%	2,721	8.3%	10,257	10.6%
\$35,000 - \$49,999	292	5.8%	2,286	7.0%	7,981	8.3%
\$50,000 - \$74,999	728	14.4%	5,021	15.4%	16,130	16.7%
\$75,000 - \$99,999	646	12.7%	4,927	15.1%	14,623	15.1%
\$100,000 - \$149,999	1,386	27.3%	7,574	23.2%	20,492	21.2%
\$150,000 - \$199,999	666	13.1%	3,663	11.2%	9,149	9.5%
\$200,000+	422	8.3%	2,574	7.9%	5,838	6.0%
Median Household Income	\$97,049		\$85,555		\$77,273	
Average Household Income	\$110,987		\$105,107		\$95,259	
Per Capita Income	\$42,961		\$42,898		\$36,823	

**Data Note:** Income is expressed in current dollars.

**Source:** U.S. Census Bureau, Census 2010 Summary File 1. Esri forecasts for 2016 and 2021.



# Demographic and Income Comparison Profile

Mallard Crossing Shopping Cent  
 Location  
 Rings: 1, 3, 5 mile radii

Prepared by Esri  
 Latitude: 42.00132  
 Longitude: -88.04432

2010 Population by Age	1 mile		3 miles		5 miles	
	Number	Percent	Number	Percent	Number	Percent
Age 0 - 4	662	4.8%	3,929	5.0%	14,807	6.0%
Age 5 - 9	814	5.9%	4,233	5.4%	14,426	5.9%
Age 10 - 14	921	6.6%	4,970	6.3%	15,214	6.2%
Age 15 - 19	954	6.9%	4,970	6.3%	15,347	6.3%
Age 20 - 24	851	6.1%	4,224	5.4%	14,951	6.1%
Age 25 - 34	1,594	11.5%	9,774	12.4%	36,442	14.9%
Age 35 - 44	1,877	13.5%	10,708	13.6%	33,994	13.9%
Age 45 - 54	2,549	18.3%	13,578	17.2%	38,064	15.6%
Age 55 - 64	2,140	15.4%	11,248	14.3%	31,029	12.7%
Age 65 - 74	848	6.1%	6,121	7.8%	16,960	6.9%
Age 75 - 84	470	3.4%	3,552	4.5%	9,500	3.9%
Age 85+	235	1.7%	1,502	1.9%	4,039	1.7%

2016 Population by Age	1 mile		3 miles		5 miles	
	Number	Percent	Number	Percent	Number	Percent
Age 0 - 4	597	4.4%	3,674	4.6%	13,939	5.6%
Age 5 - 9	774	5.7%	4,235	5.3%	14,784	6.0%
Age 10 - 14	870	6.4%	4,618	5.8%	14,809	6.0%
Age 15 - 19	805	5.9%	4,429	5.6%	13,873	5.6%
Age 20 - 24	688	5.0%	4,167	5.2%	14,544	5.9%
Age 25 - 34	1,671	12.3%	9,954	12.5%	36,414	14.7%
Age 35 - 44	1,801	13.2%	10,558	13.2%	34,412	13.9%
Age 45 - 54	2,105	15.4%	11,924	14.9%	34,019	13.7%
Age 55 - 64	2,320	17.0%	12,263	15.4%	33,637	13.6%
Age 65 - 74	1,283	9.4%	8,345	10.5%	22,440	9.0%
Age 75 - 84	457	3.4%	3,897	4.9%	10,523	4.2%
Age 85+	254	1.9%	1,732	2.2%	4,695	1.9%

2021 Population by Age	1 mile		3 miles		5 miles	
	Number	Percent	Number	Percent	Number	Percent
Age 0 - 4	578	4.3%	3,681	4.6%	14,046	5.6%
Age 5 - 9	714	5.3%	3,963	4.9%	14,046	5.6%
Age 10 - 14	831	6.2%	4,507	5.6%	14,802	5.9%
Age 15 - 19	767	5.7%	4,149	5.1%	13,402	5.3%
Age 20 - 24	589	4.4%	3,635	4.5%	13,079	5.2%
Age 25 - 34	1,457	10.8%	9,797	12.1%	35,667	14.2%
Age 35 - 44	2,018	15.0%	11,622	14.4%	37,532	14.9%
Age 45 - 54	1,925	14.3%	10,890	13.5%	31,844	12.7%
Age 55 - 64	2,119	15.7%	12,040	14.9%	33,080	13.2%
Age 65 - 74	1,647	12.2%	9,755	12.1%	26,031	10.4%
Age 75 - 84	603	4.5%	4,786	5.9%	12,678	5.0%
Age 85+	246	1.8%	1,842	2.3%	4,998	2.0%

Source: U.S. Census Bureau, Census 2010 Summary File 1. Esri forecasts for 2016 and 2021.



# Demographic and Income Comparison Profile

Mallard Crossing Shopping Cent  
 Location  
 Rings: 1, 3, 5 mile radii

Prepared by Esri  
 Latitude: 42.00132  
 Longitude: -88.04432

2010 Race and Ethnicity	1 mile		3 miles		5 miles	
	Number	Percent	Number	Percent	Number	Percent
White Alone	10,985	78.9%	63,478	80.5%	183,761	75.1%
Black Alone	269	1.9%	1,849	2.3%	8,499	3.5%
American Indian Alone	18	0.1%	161	0.2%	770	0.3%
Asian Alone	2,082	15.0%	10,135	12.9%	32,161	13.1%
Pacific Islander Alone	1	0.0%	14	0.0%	59	0.0%
Some Other Race Alone	304	2.2%	1,709	2.2%	13,738	5.6%
Two or More Races	255	1.8%	1,464	1.9%	5,783	2.4%
Hispanic Origin (Any Race)	966	6.9%	5,964	7.6%	37,797	15.4%

2016 Race and Ethnicity	1 mile		3 miles		5 miles	
	Number	Percent	Number	Percent	Number	Percent
White Alone	10,339	75.9%	62,093	77.8%	179,130	72.2%
Black Alone	224	1.6%	1,743	2.2%	8,145	3.3%
American Indian Alone	16	0.1%	150	0.2%	731	0.3%
Asian Alone	2,445	17.9%	12,174	15.3%	38,148	15.4%
Pacific Islander Alone	1	0.0%	18	0.0%	73	0.0%
Some Other Race Alone	325	2.4%	1,934	2.4%	15,307	6.2%
Two or More Races	278	2.0%	1,682	2.1%	6,557	2.6%
Hispanic Origin (Any Race)	1,034	7.6%	6,794	8.5%	42,135	17.0%

2021 Race and Ethnicity	1 mile		3 miles		5 miles	
	Number	Percent	Number	Percent	Number	Percent
White Alone	9,868	73.1%	60,813	75.4%	175,079	69.7%
Black Alone	194	1.4%	1,687	2.1%	7,978	3.2%
American Indian Alone	15	0.1%	152	0.2%	744	0.3%
Asian Alone	2,777	20.6%	13,994	17.3%	43,393	17.3%
Pacific Islander Alone	1	0.0%	22	0.0%	84	0.0%
Some Other Race Alone	347	2.6%	2,159	2.7%	16,819	6.7%
Two or More Races	291	2.2%	1,841	2.3%	7,109	2.8%
Hispanic Origin (Any Race)	1,115	8.3%	7,660	9.5%	46,463	18.5%

Source: U.S. Census Bureau, Census 2010 Summary File 1. Esri forecasts for 2016 and 2021.



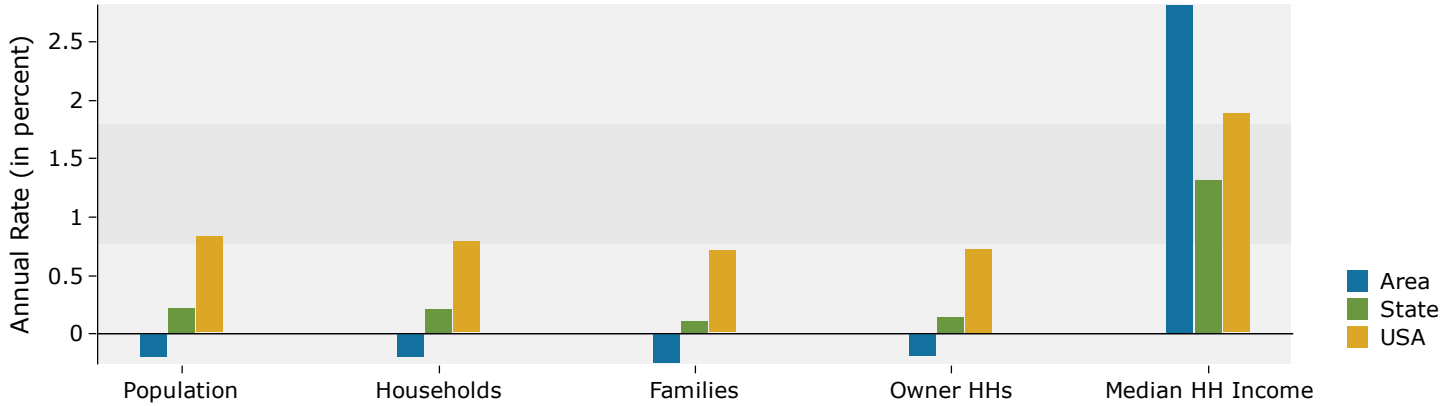
# Demographic and Income Comparison Profile

Mallard Crossing Shopping Cent  
 Location  
 Rings: 1, 3, 5 mile radii

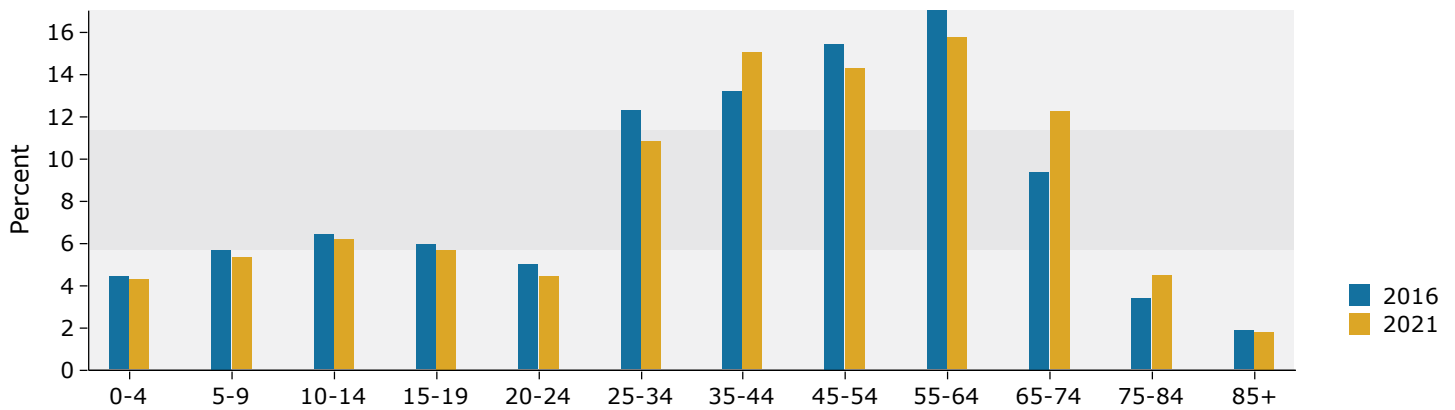
Prepared by Esri  
 Latitude: 42.00132  
 Longitude: -88.04432

## 1 mile

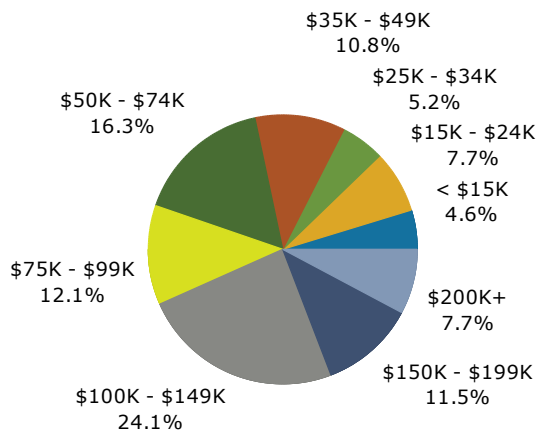
### Trends 2016-2021



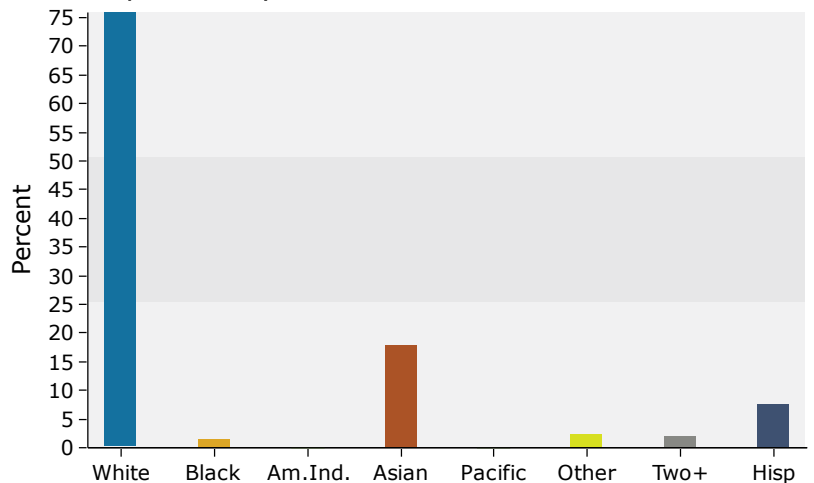
### Population by Age



### 2016 Household Income



### 2016 Population by Race



Source: U.S. Census Bureau, Census 2010 Summary File 1. Esri forecasts for 2016 and 2021.



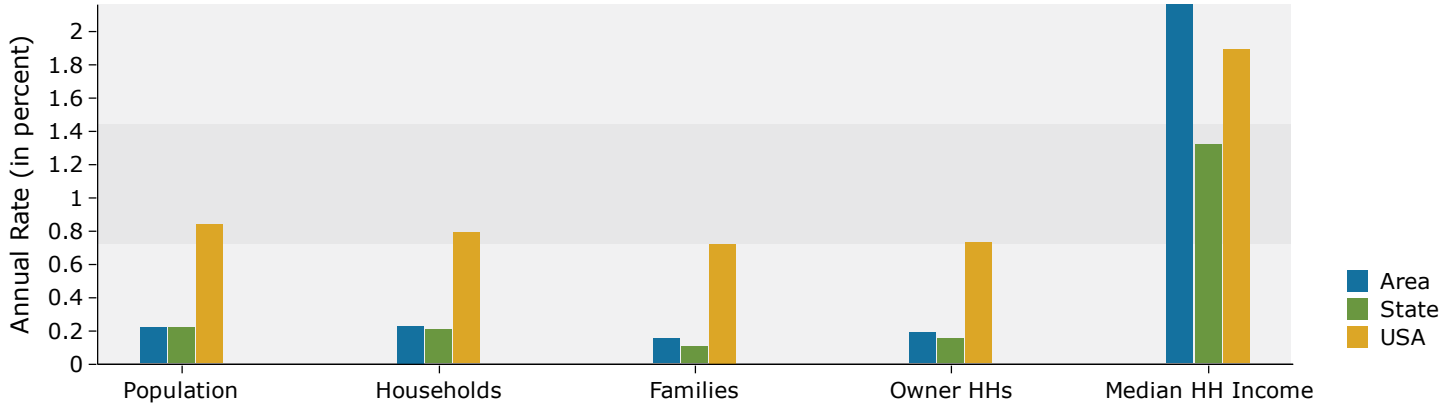
# Demographic and Income Comparison Profile

Mallard Crossing Shopping Cent  
 Location  
 Rings: 1, 3, 5 mile radii

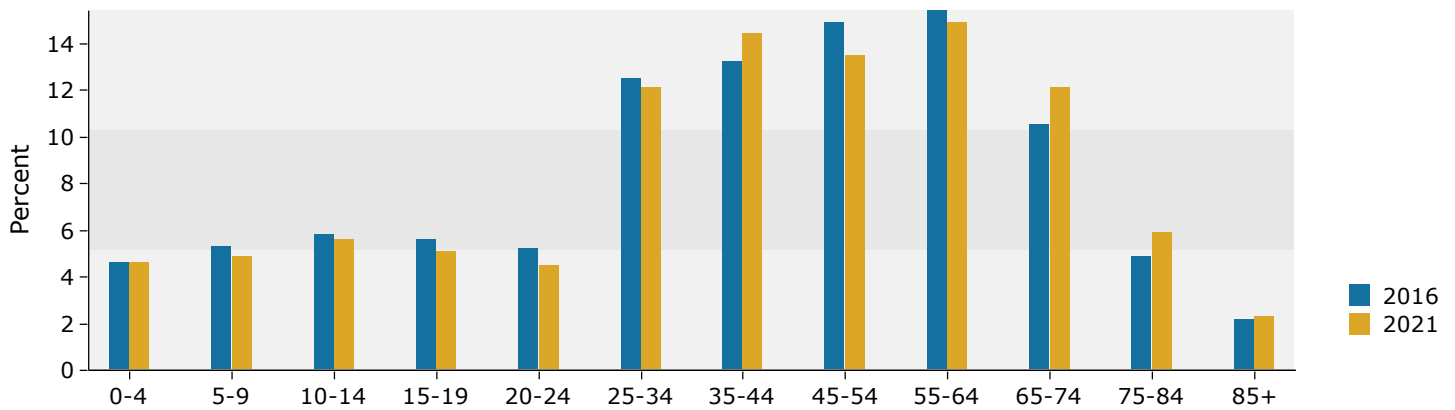
Prepared by Esri  
 Latitude: 42.00132  
 Longitude: -88.04432

## 3 miles

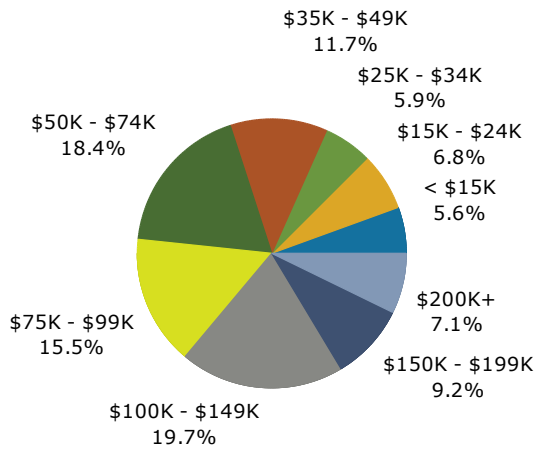
### Trends 2016-2021



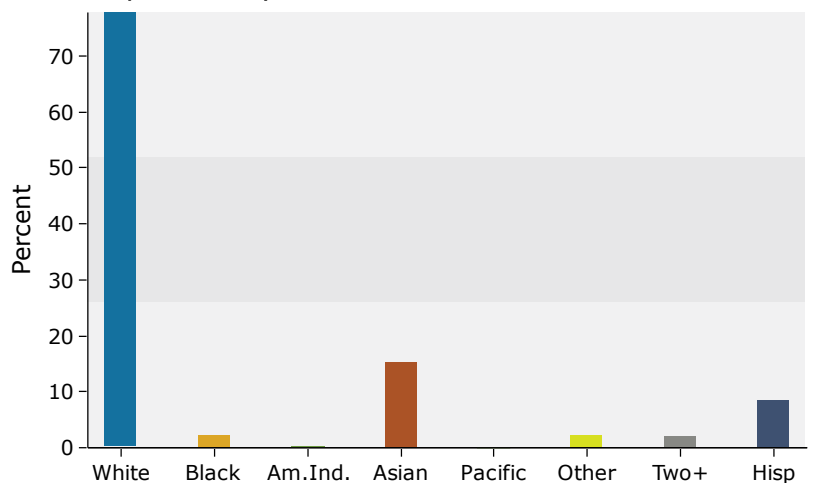
### Population by Age



### 2016 Household Income



### 2016 Population by Race



Source: U.S. Census Bureau, Census 2010 Summary File 1. Esri forecasts for 2016 and 2021.



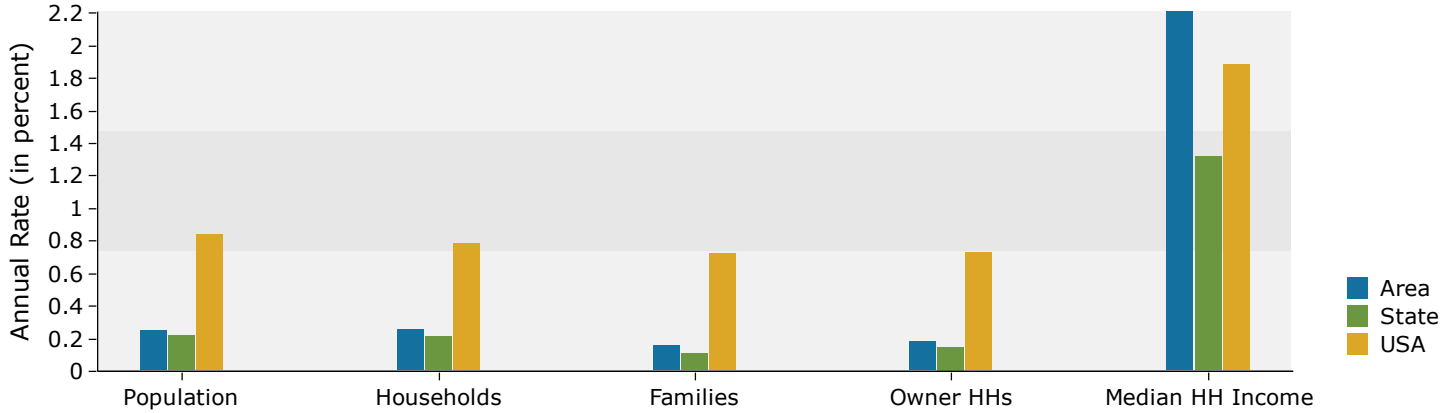
# Demographic and Income Comparison Profile

Mallard Crossing Shopping Cent  
 Location  
 Rings: 1, 3, 5 mile radii

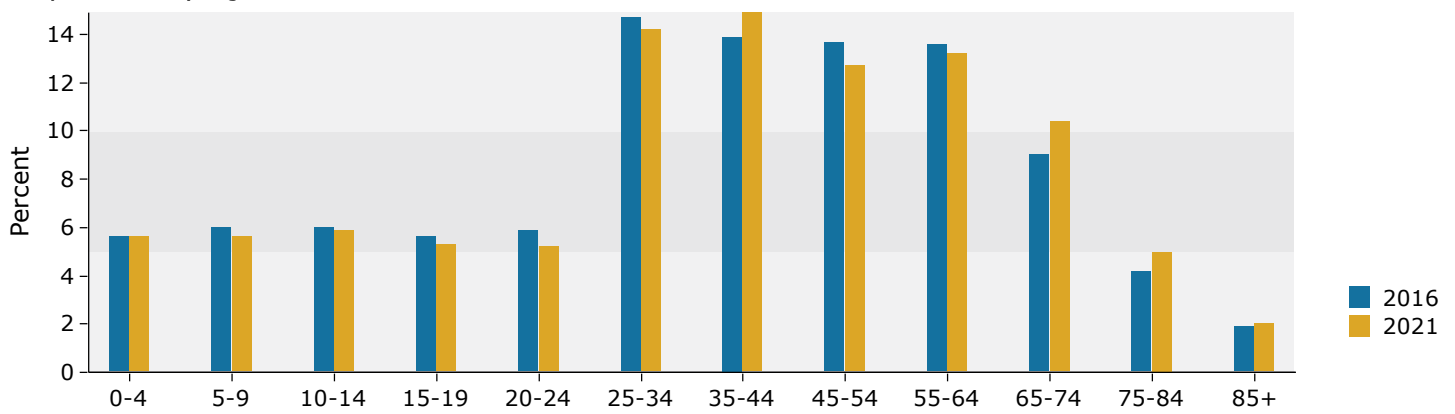
Prepared by Esri  
 Latitude: 42.00132  
 Longitude: -88.04432

## 5 miles

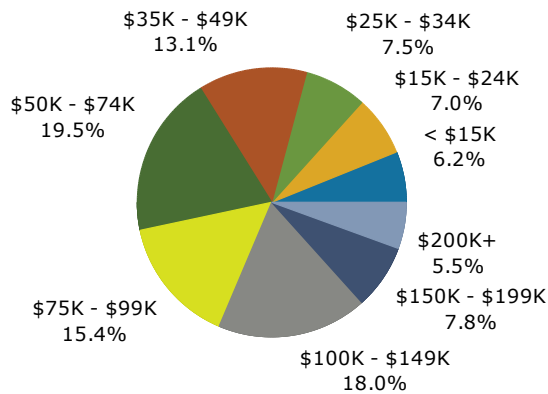
### Trends 2016-2021



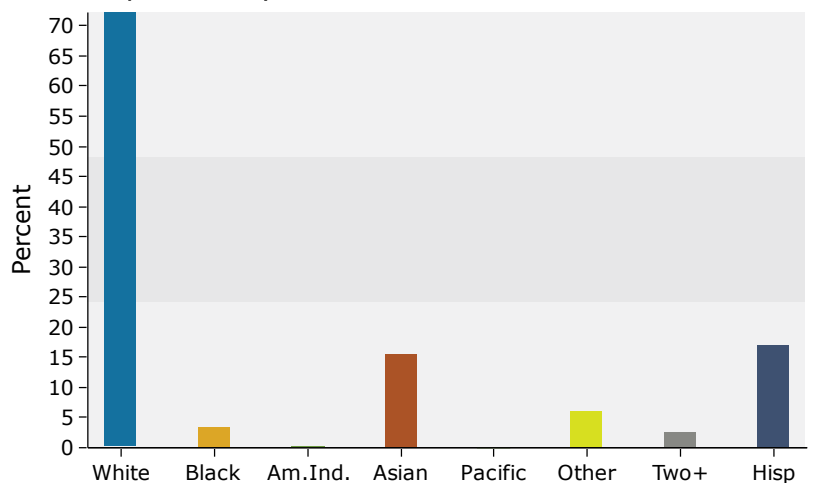
### Population by Age



### 2016 Household Income



### 2016 Population by Race



Source: U.S. Census Bureau, Census 2010 Summary File 1. Esri forecasts for 2016 and 2021.