

THATCHER WOODS
 3049 N. THATCHER AVE.
 RIVER GROVE, IL 60171
 SQUARE FOOTAGE: **1,166**
UNIT 05

EXISTING CONDITIONS

FRONT:

STOREFRONT ASSEMBLY 1" GLAZING
 GYP. BOARD ON METAL FRAMING OVER
 MASONRY

DEMISING WALLS:

1 HR. GYPSUM BOARD ON METAL STUDS
 GYP. BOARD ON METAL FRAMING OVER
 MASONRY

REAR:

PAINT MASONRY

OFFICES/BREAK:

FLOORS: CARPET, VCT & CT
 CEILINGS: 2x2 A.C.T. @ 9'-10" A.F.F.
 WALLS: PAINT & VINYL BASE

TOILET:

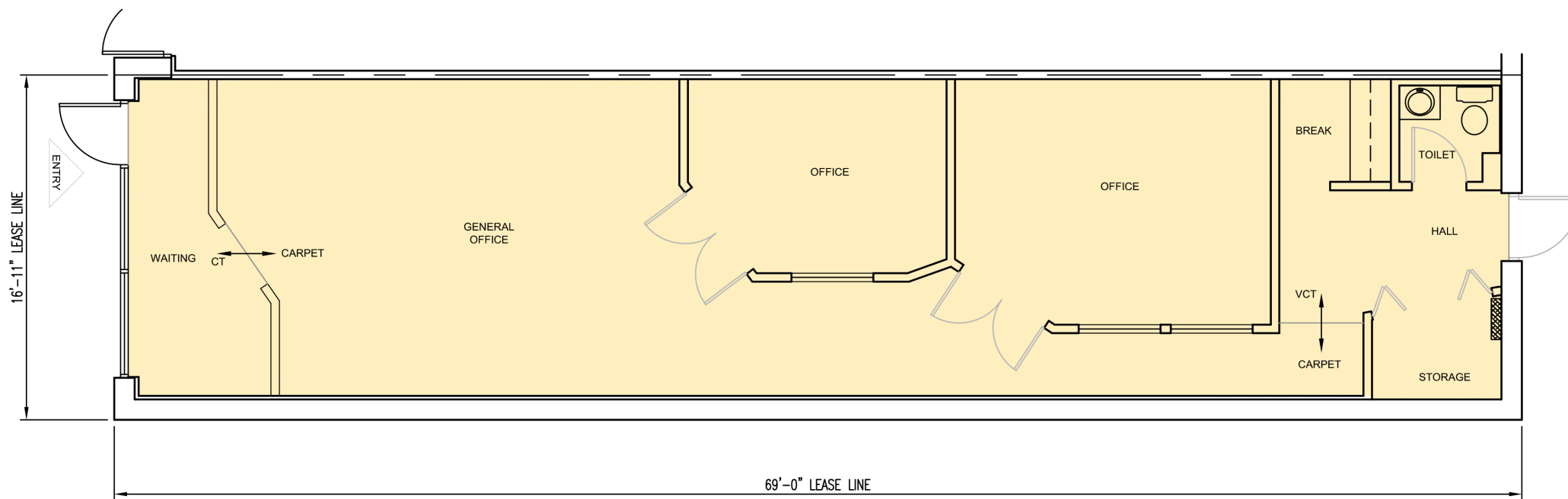
FLOORS: VCT
 CEILINGS: GYP. BD. @ 8'-0" A.F.F.
 WALLS: PAINT & VINYL BASE

EXISTING SYSTEMS

ELECTRICAL:

200A 120/208V, 3Ø 4W 42 CIRCUIT PANEL
 POWER & DATA OUTLETS
 RECESSED CFL CAN LIGHTS
 HVAC: ROOFTOP UNIT
 WATER SERVICE: 3/4"Ø
 WATER HEATER ABOVE TOILET

AUGUST 26, 2015
W.O. #973383



FLOOR PLAN 
 SCALE: NONE

VACANT UNIT PLAN

LEASING INQUIRIES
PHONE: 877.206.5656
 EMAIL: LEASING@IRCETAILCENTERS.COM
IRCETAILCENTERS.COM