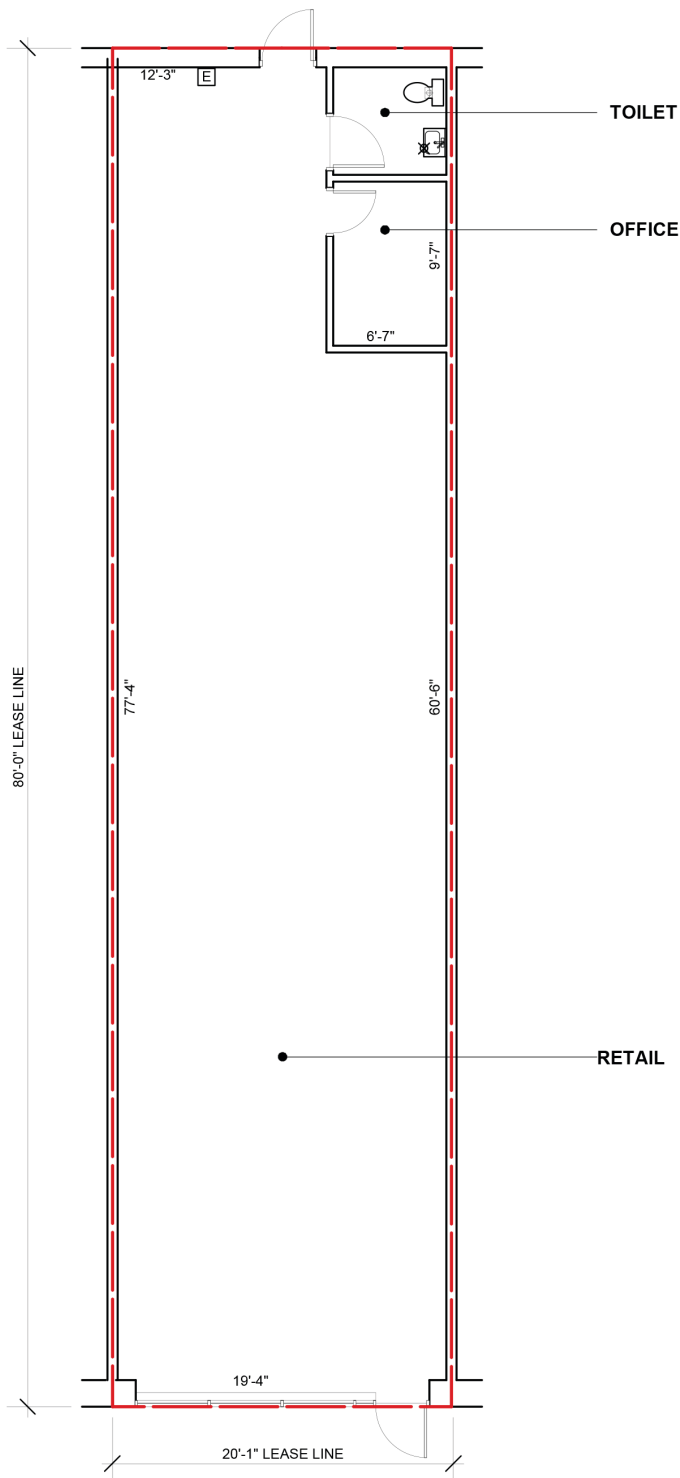


AUGUST 27, 2014

BERGEN PLAZA

7105 10TH STREET NORTH
OAKDALE, MN
UNIT 14
SQUARE FOOTAGE: 1,600



Existing Floor Plan

EXISTING CONDITIONS

- FRONT WALL
STOREFRONT GLASS
- REAR WALL
GYPSUM BOARD ON METAL FRAMING
OVER CMU
- DEMISING WALLS
GYPSUM BOARD ON 6" METAL STUDS
- INTERIOR WALLS
GYPSUM BOARD ON METAL STUDS
- CLEAR HEIGHT
12'-4" +/- TO UNDERSIDE OF BAR JOISTS
- RETAIL / OFFICE
FLOOR: CARPET WITH VINYL BASE
WALLS: PAINTED GYPSUM BOARD
CEILING: 2' X 4' A.C.T. 10'-0" A.F.F.
- TOILET
FLOOR: 12"X12" C.T. WITH VINYL BASE
WALLS: 12"X12" C.T. TO 48" PAINTED
GYPSUM BOARD ABOVE
CEILING: 2' X 4' A.C.T. 8'-0" A.F.F.
- EXISTING SYSTEMS
HVAC: ROOFTOP UNIT
WATER HEATER
EXHAUST FAN
FIRE SPRINKLERS
ELECTRICAL: 24 BREAKER PANEL
ELECTRICAL AND DATA OUTLETS



15650 36th Ave. No. Suite 170
Plymouth, Minnesota 55446
763-557-9081 F 763-557-9233

LEASING INQUIRIES
PHONE: 877.206.5656

EMAIL: LEASING@IRCRETAILCENTERS.COM
IRCRETAILCENTERS.COM