

Burnsville Crossing

14260 Plymouth Ave
Burnsville, MN

1,050 Sq. Ft.

EXISTING CONDITIONS

FRONT WALL
STOREFRONT GLASS

REAR WALL
GYPSUM BOARD ON 6" METAL STUDS

DEMISING WALLS
GYPSUM BOARD ON 3 5/8" METAL STUDS

INTERIOR WALLS
GYPSUM BOARD ON METAL STUDS

RETAIL
FLOOR: CARPET WITH VINYL BASE
C.T. WITH VINYL BASE
WALLS: PAINTED GYPSUM BOARD
CEILING: 2' X 2' A.C.T. 8'-9" A.F.F.
LINEAR METAL AT 8'-9" A.F.F.
(SOFFITS AT 8'-0")

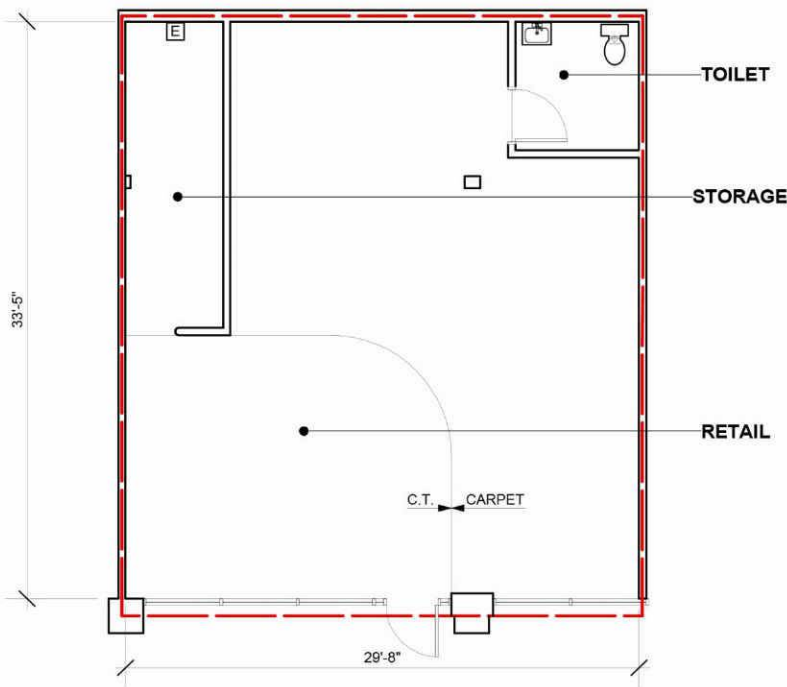
STORAGE
FLOOR: CARPET WITH VINYL BASE
WALLS: PAINTED GYPSUM BOARD
CEILING: 2' X 2' A.C.T. 8'-9" A.F.F.

TOILET
FLOOR: C.T. WITH C.T. BASE
WALLS: C.T. TO 48" PAINTED
GYPSUM BOARD ABOVE
CEILING: 2' X 2' A.C.T. 8'-0" A.F.F.

EXISTING SYSTEMS
HVAC: ROOFTOP UNIT
WATER HEATER
EXHAUST FAN
FIRE SPRINKLERS
ELECTRICAL: 22 BREAKER PANEL
ELECTRICAL AND DATA OUTLETS



15650 36th Ave. No. Suite 170
Plymouth, Minnesota 55446
763-557-9081 F 763-557-9233



Existing Floor Plan



LEASING INQUIRIES
PHONE: 877.206.5656

EMAIL: LEASING@IRCETAILCENTERS.COM
IRCETAILCENTERS.COM