

LOCATION

7531-B LEMONT RD.,
 DARIEN, IL. 60561
 GROSS SQUARE FOOTAGE : 1,478

EXISTING CONSTRUCTION

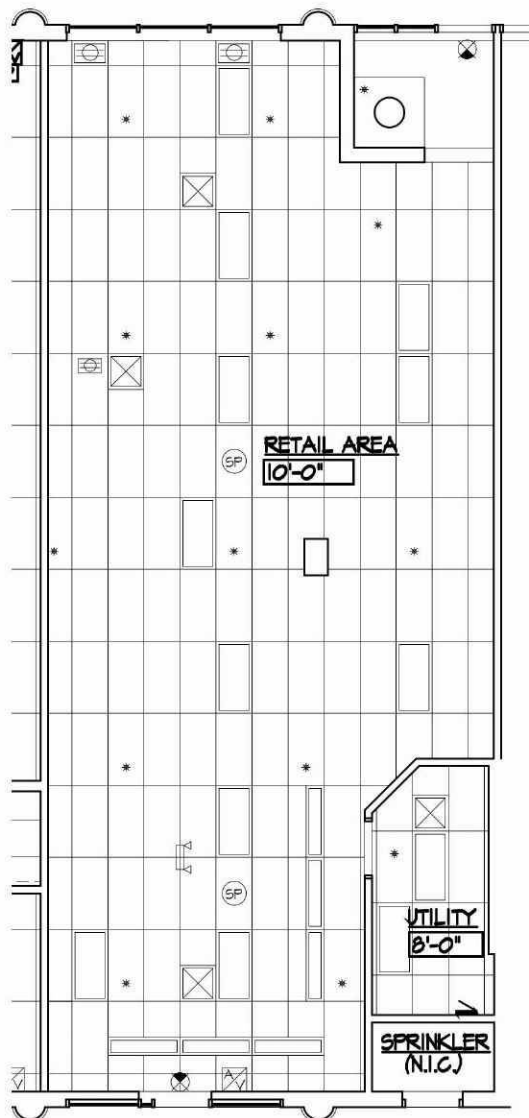
FRONT / SIDE / REAR :
 ALUM. STOREFRONT ASSEMBLY
 GYP. BD. ON METAL FURRING
 OVER MASONRY

SIDE :
 GYP. BD. DEMISING WALLS.

RETAIL AREA :
 OUTLETS (MISC. LOCATIONS)
 2x4 AND 1x4 LIGHT FIXTURES
 2x4 LAY-IN CEILING TILE & GRID
 WALL FINISH: PAINT W/ VINYL BASE

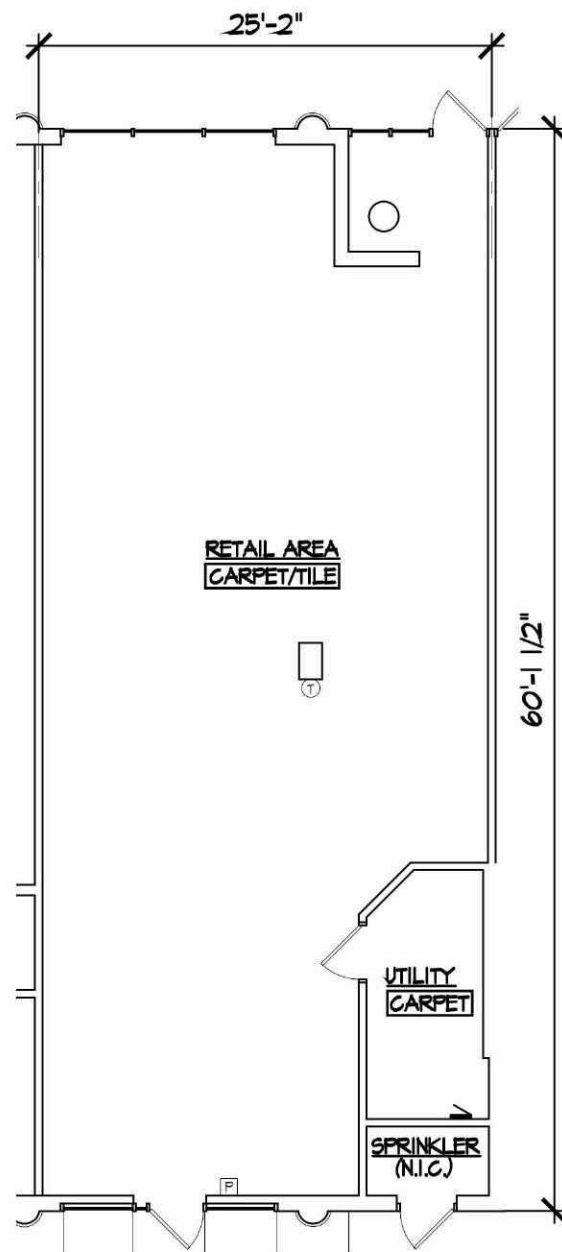
UTILITY AREA :
 OUTLETS (MISC. LOCATIONS)
 2x4 LAY-IN LIGHT FIXTURES
 2x4 LAY-IN CEILING TILE & GRID
 WALL FINISH: PAINT W/ VINYL BASE

ELECTRICAL :
 200A PANEL : 120 / 208V, 3Φ, 4W,
 42 BRKR PANEL W/ 200A DISC.



CEILING PLAN

SCALE: 3/32" = 1'-0"



FLOOR PLAN

SCALE: 3/32" = 1'-0"

LEGEND

	FIRE ALARM PULL STATION		1x4 LINEAR LIGHT FIXTURE
	SPEAKER		HEAT / SMOKE DETECTOR
	TRACK LIGHT		SECURITY CAMERA
	TOILET EXH. FAN		THERMOSTAT
	2x4 FLUORESCENT LIGHT FIXTURE		POWER PANEL
	PENDANT LIGHT FIXTURE		DIFFUSER / REGISTER
	EXIT SIGN		AUDIO / VISUAL ALARM SYSTEM
	BATTERY PACK EMERGENCY FIXTURE		

GRAPHIC SCALE

 JUNE 30, 2017