



**RetailCenters**

**FOUR FLAGGS**

8271 N. MILWAUKEE  
 NILES, IL 60714  
 SQUARE FOOTAGE: 1,663  
 UNIT 13

**EXISTING CONSTRUCTION**

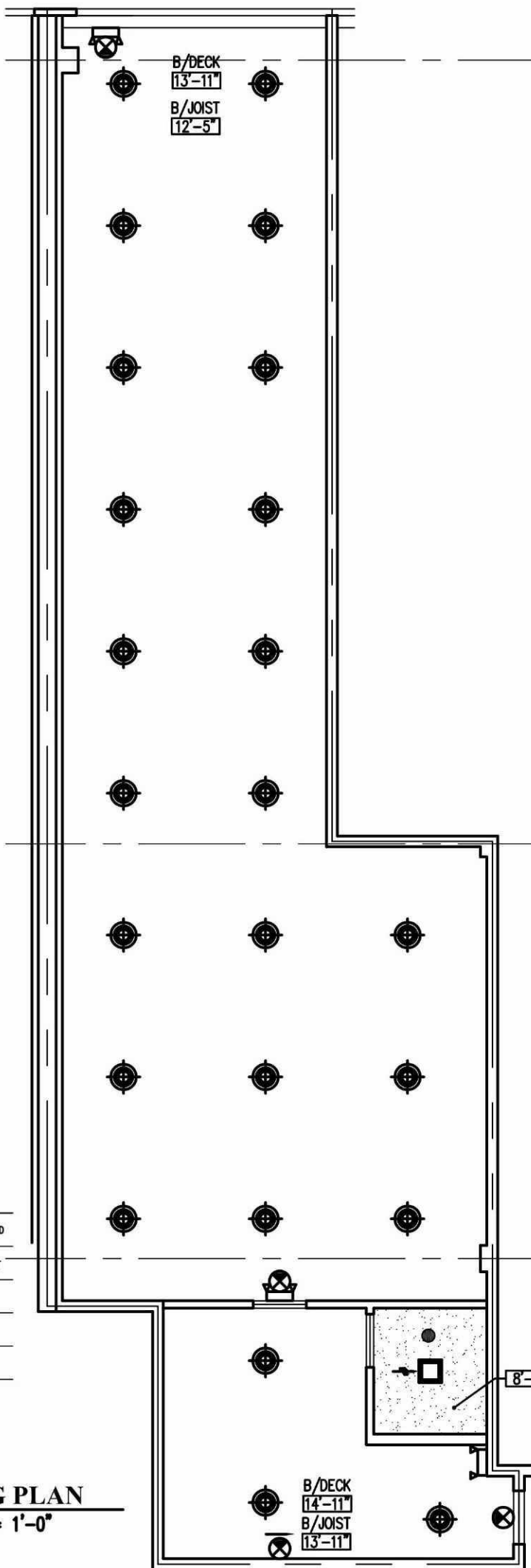
FRONT: ALUM. STOREFRONT ASSEMBLY  
 (1/4" GLASS) / EXPOSED MASONRY  
 SIDES: 1 HR. GYP. BD. DEMISING WALL  
 REAR: 1 HR. GYP. BD. DEMISING WALL

SALES/STORAGE  
 OUTLETS & TELE/DATA (MISC. LOCATIONS)  
 PENDANT HIGH BAY FIXTURES  
 OPEN TO DECK  
 FINISHES:  
 PAINT, SLATWALL & VINYL BASE

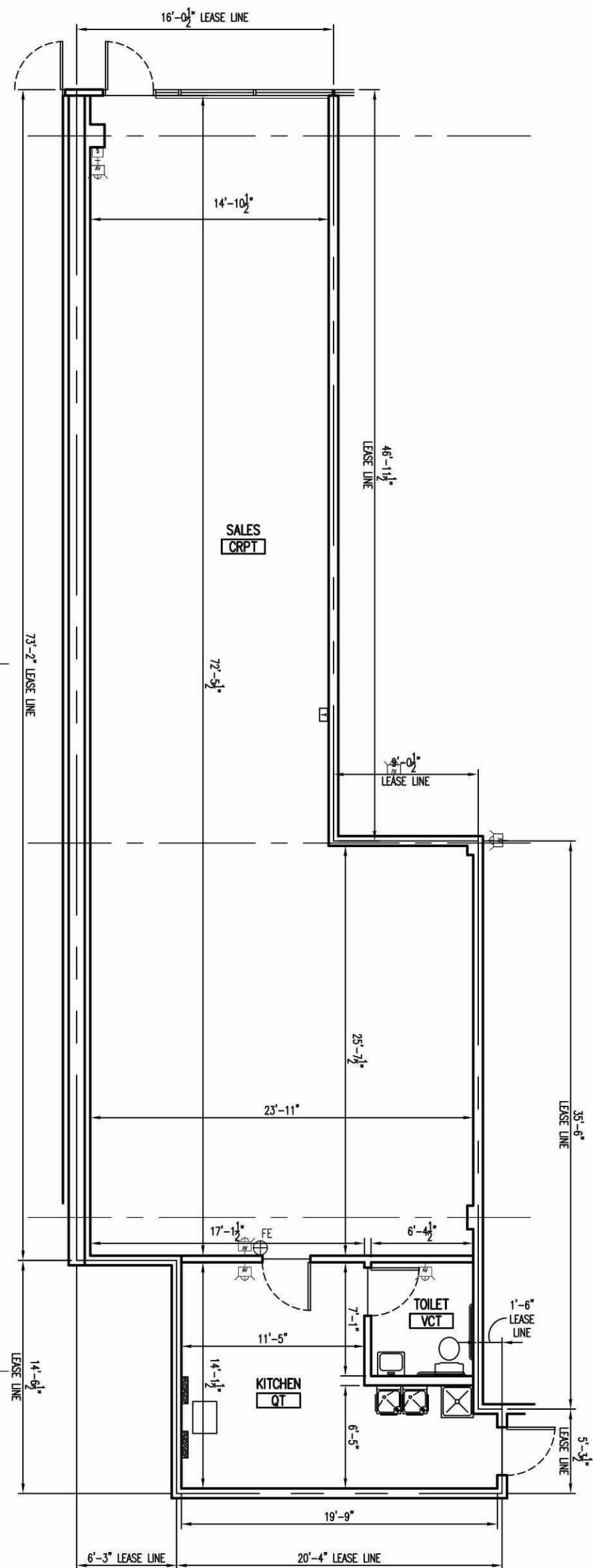
TOILET (PRE-2010-ADA):  
 GYP. BD. CEILING  
 LAVATORY  
 WATER CLOSET  
 COMBO LIGHT / EXHAUST FAN  
 FINISHES:  
 PAINT & VINYL BASE

ELECTRICAL  
 100A 277/480V, 3Ø 4W  
 30 CKT PANEL  
 45 KVA STEP DN TRANSFORMER  
 200A 120/208V, 3Ø 4W  
 30 CKT PANEL

WATER SERVICE: 3/4"Ø



**CEILING PLAN**  
 SCALE: 1/8" = 1'-0"



**FLOOR PLAN**  
 SCALE: 1/16" = 1'-0"

LEGEND			
	FLUORESCENT LIGHT FIXTURE		SPRINKLER HEAD
	BATTERY PACK EMERGENCY FIXTURE		THERMOSTAT
	EXIT SIGN		POWER PANEL
	TOILET EXHAUST FAN		DIFFUSER / REGISTER
	DOWNLIGHT FIXTURE		F.A. DEVICES
	FIRE EXTINGUISHER		

