



RetailCenters

FOUR FLAGGS

8271 N. MILWAUKEE

NILES, IL 60714

SQUARE FOOTAGE: 1,484

UNIT 14

EXISTING CONSTRUCTION

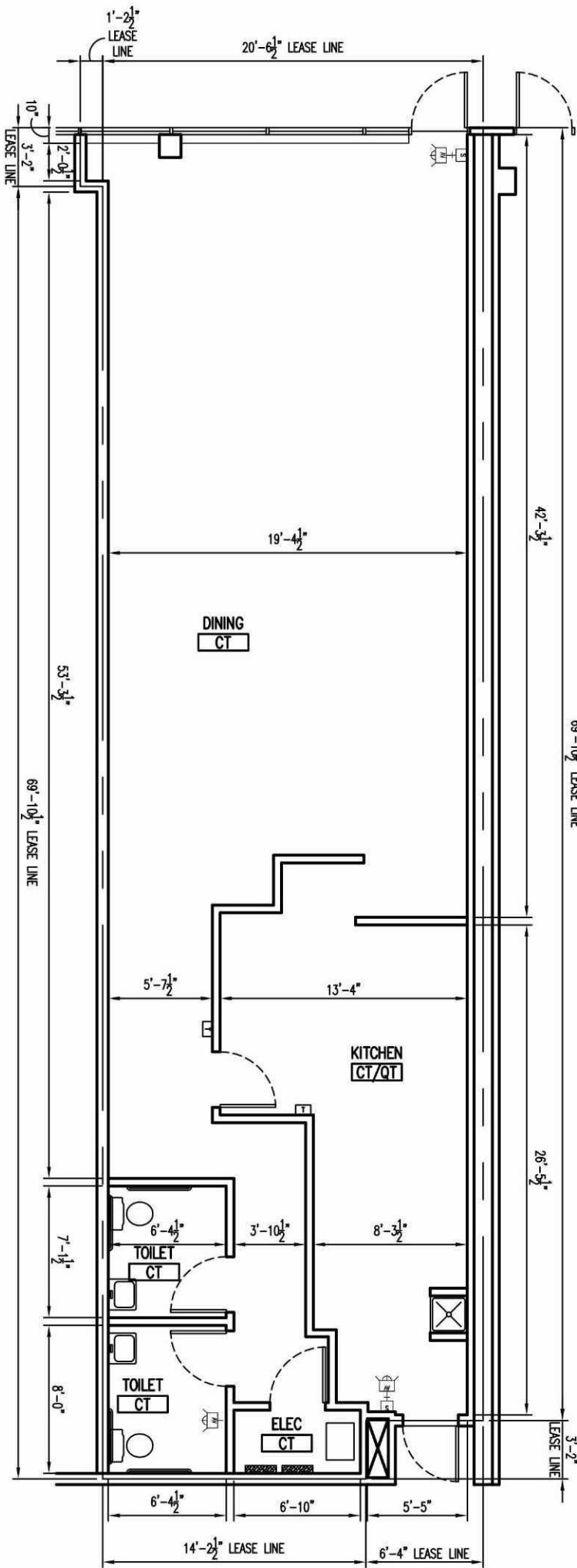
FRONT: ALUM. STOREFRONT ASSEMBLY (1/4" GLASS) / CT ON GYP. BD. ON MTL. FRAMING OVER MASONRY
 SIDES: 1 HR. GYP. BD. DEMISING WALL
 REAR: 1 HR. GYP. BD. ON MTL. FRAMING - DEMISING WALL

DINING/SERVICE/KITCHEN: OUTLETS & TELE/DATA (MISC. LOCATIONS) 2x2 RECESSED FLUORESCENT FIXTURES 2x2 CEILING TILE & GRID
 FINISHES: WD CROWN PAINT, FRP & CERAMIC TILE BASE

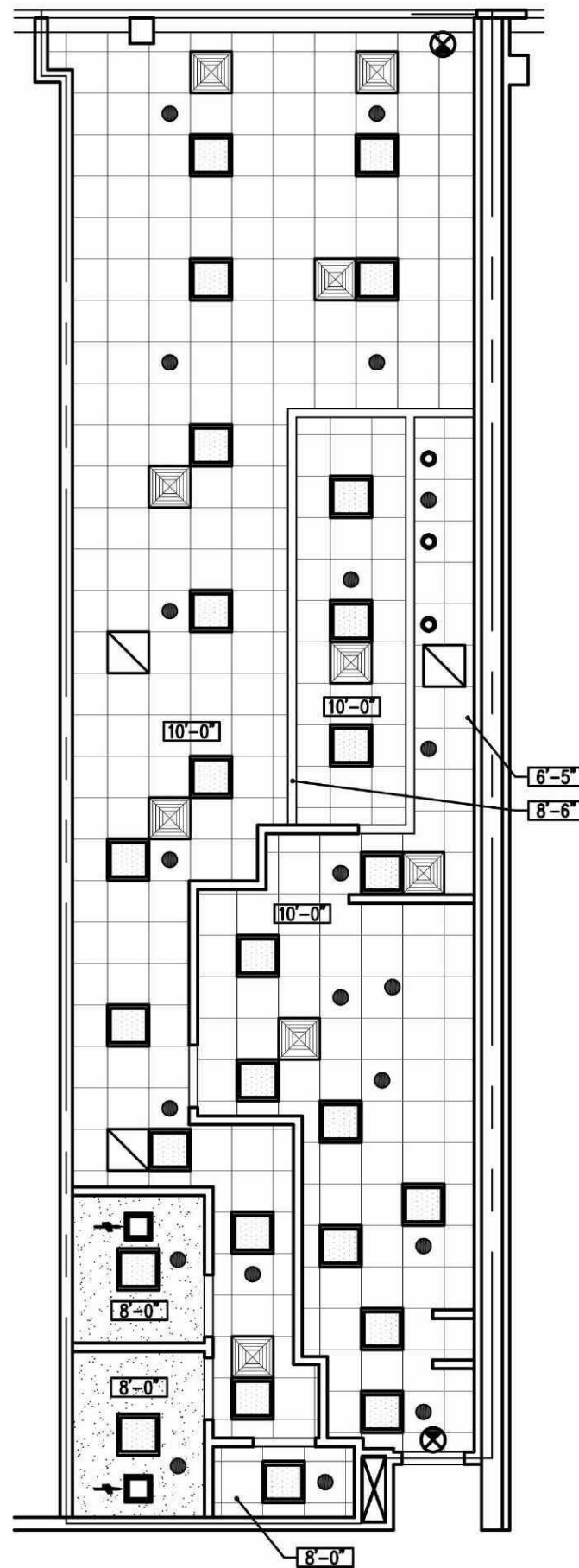
TOILETS (PRE-2010-ADA): GYP. BD. CEILING SURFACE MTD. 2x2 LAVATORY WATER CLOSET EXHAUST FAN
 FINISHES: CT WALL & CT COVE BASE

ELECTRICAL 200A 277/480V, 3Ø 4W 42 BRKR PANEL 112.5 KVA STEP-DN TRANSFORMER 400A 120/208V, 3Ø 4W 42 BRKR PANEL

WATER SERVICE: 1"Ø AT REAR OF SPACE



FLOOR PLAN
 SCALE: 1/8" = 1'-0"



CEILING PLAN
 SCALE: 1/8" = 1'-0"

LEGEND

	FLUORESCENT LIGHT FIXTURE		SPRINKLER HEAD
	BATTERY PACK EMERGENCY FIXTURE		THERMOSTAT
	EXIT SIGN		POWER PANEL
	TOILET EXHAUST FAN		DIFFUSER / REGISTER
	DOWNLIGHT FIXTURE		F.A. DEVICES
	FIRE EXTINGUISHER		

