

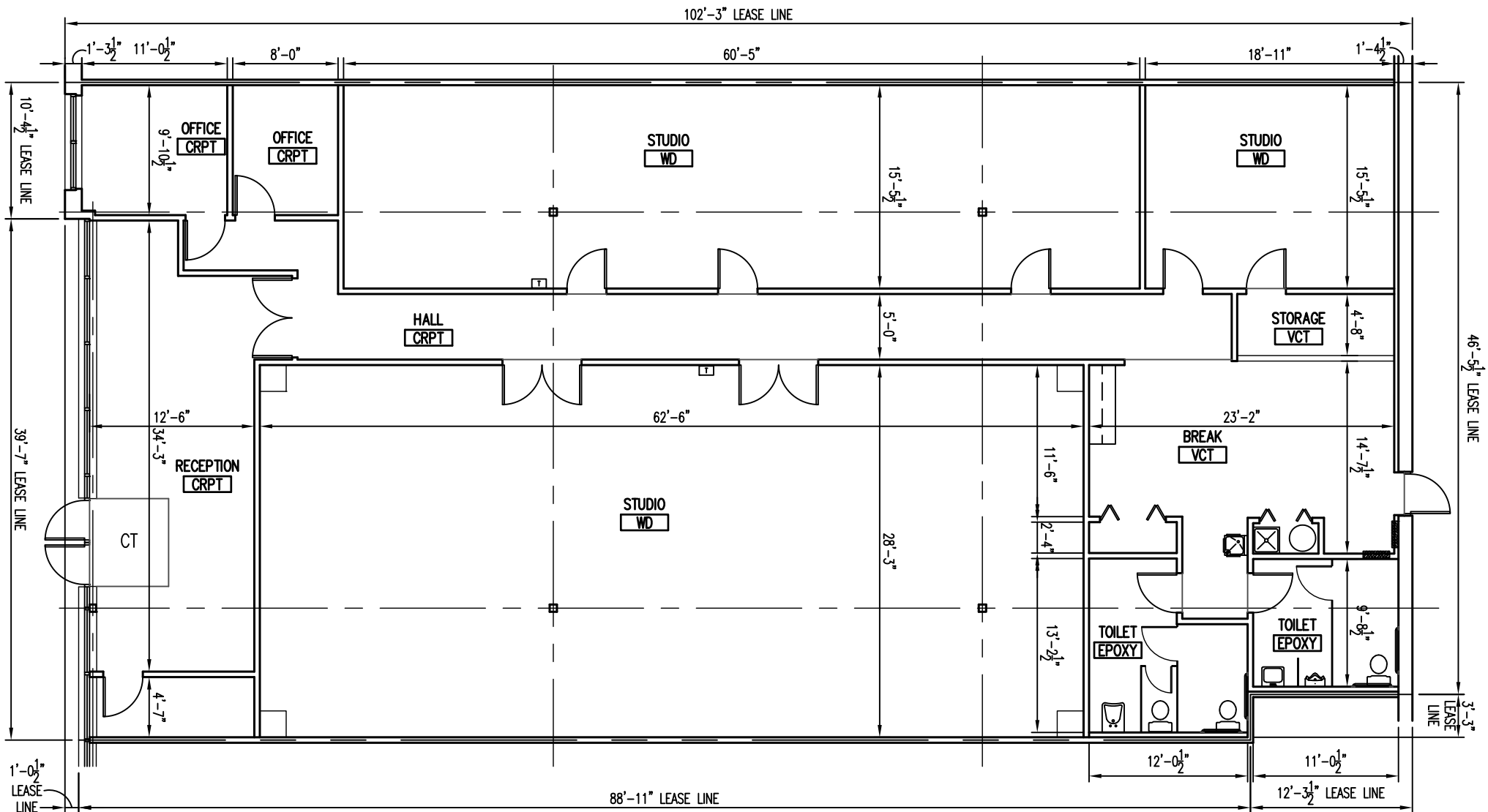
FRONT: ALUM. STOREFRONT ASSEMBLY
 (1" GLASS) / GYP. BD.
 ON MTL. FRAMING/MASONRY
 SIDES: 1 HR. GYP. BD. DEMISING WALL
 REAR: GYP. BD. ON MTL. FRAMING OVER CMU

RECEPTION/STUDIOS/OFFICES/STORAGE:
 OUTLETS & TELE/DATA (MISC. LOCATIONS)
 RECESSED 2x4 FLUORESCENT & WALL
 SCONCES IN STUDIO AREA
 2x4 CEILING TILE & GRID
 FINISHES:
 PAINT, WD & VINYL BASE

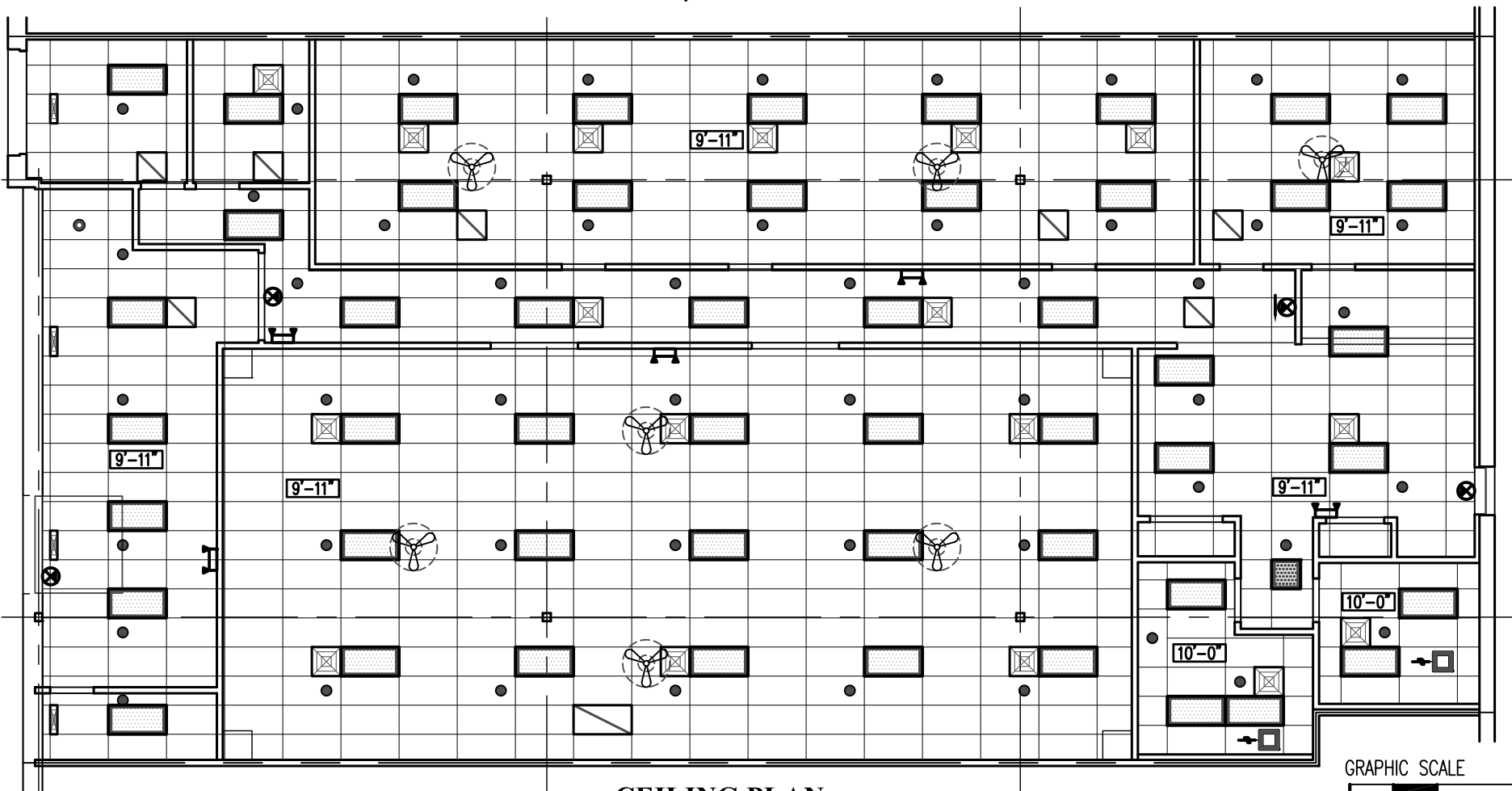
TOILETS (PRE-2010-ADA):
 2x4 CEILING TILE & GRID
 RECESSED 2x4 FLUORESCENT
 LAVATORIES, WATER CLOSETS & URINAL
 EXHAUST FAN
 FINISHES:
 PAINT & VINYL BASE

ELECTRICAL (TWO SERVICES)
 200A 120/208V, 3Ø 4W 30 CKT PANEL
 125A 120/208V, 3Ø 4W 30 CKT PANEL

WATER SERVICE: 1"Ø MIN.



FLOOR PLAN
 SCALE: 3/32" = 1'-0" 



CEILING PLAN
 SCALE: 3/32" = 1'-0"

