



IROQUOIS CENTER
 1163 E. OGDEN AVE 630
 NAPERVILLE, IL 60563
 SQUARE FOOTAGE: 3,000
 UNIT 23

EXISTING CONSTRUCTION

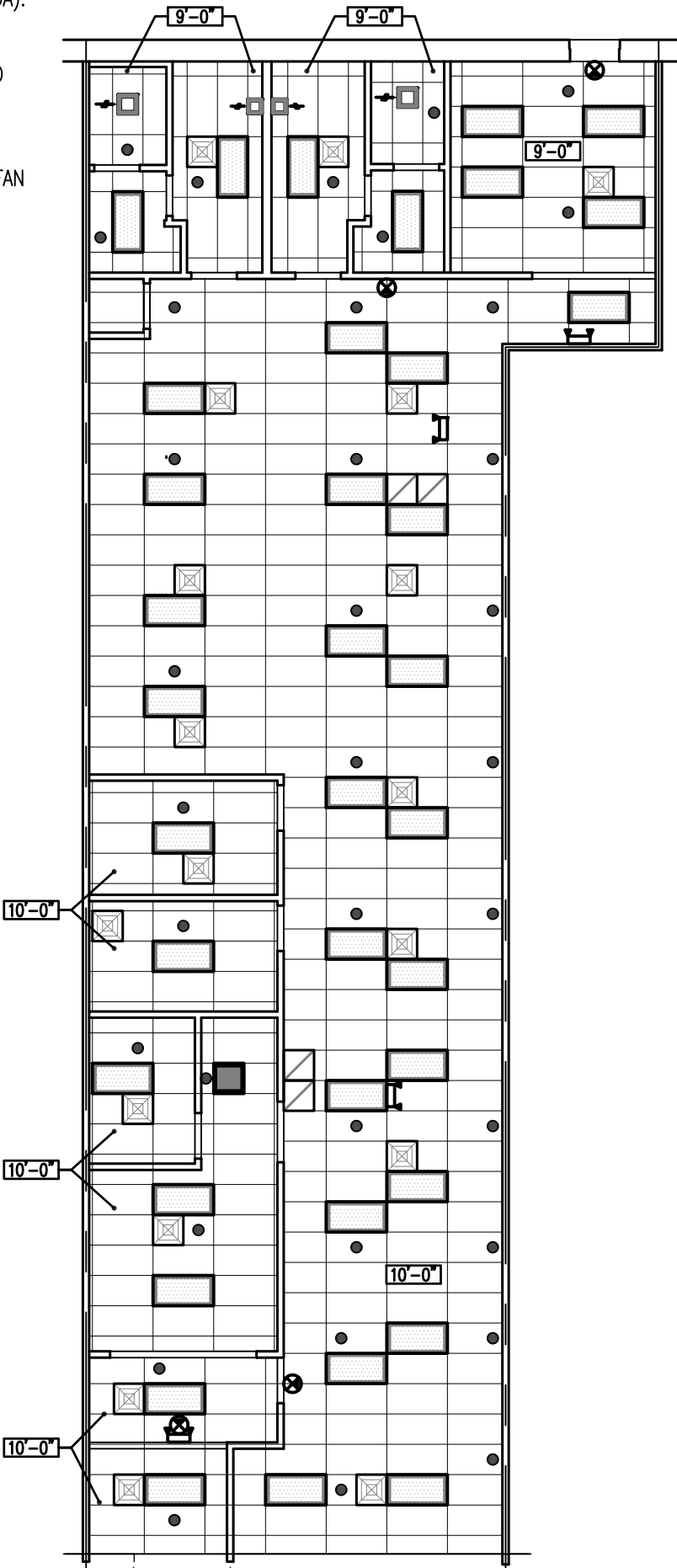
FRONT: ALUM. STOREFRONT
 ASSEMBLY/GYP. BD. OVER
 FURRING OVER MASONRY
SIDES: 1 HR. GYP. BD.
 DEMISING WALL
REAR: GYP. BD. FURRING
 OVER MTL. FURRING
 OVER MASONRY

OFFICES:
 OUTLETS & TELE/DATA
 (MISC. LOCATIONS)
 2x4 & 2x2 RECESSED
 FLUORESCENT FIXTURES
 2x4 CEILING TILE & GRID
 BASE & WALL P.LAM. CABINETS
FINISHES:
 PAINT, VINYL BASE

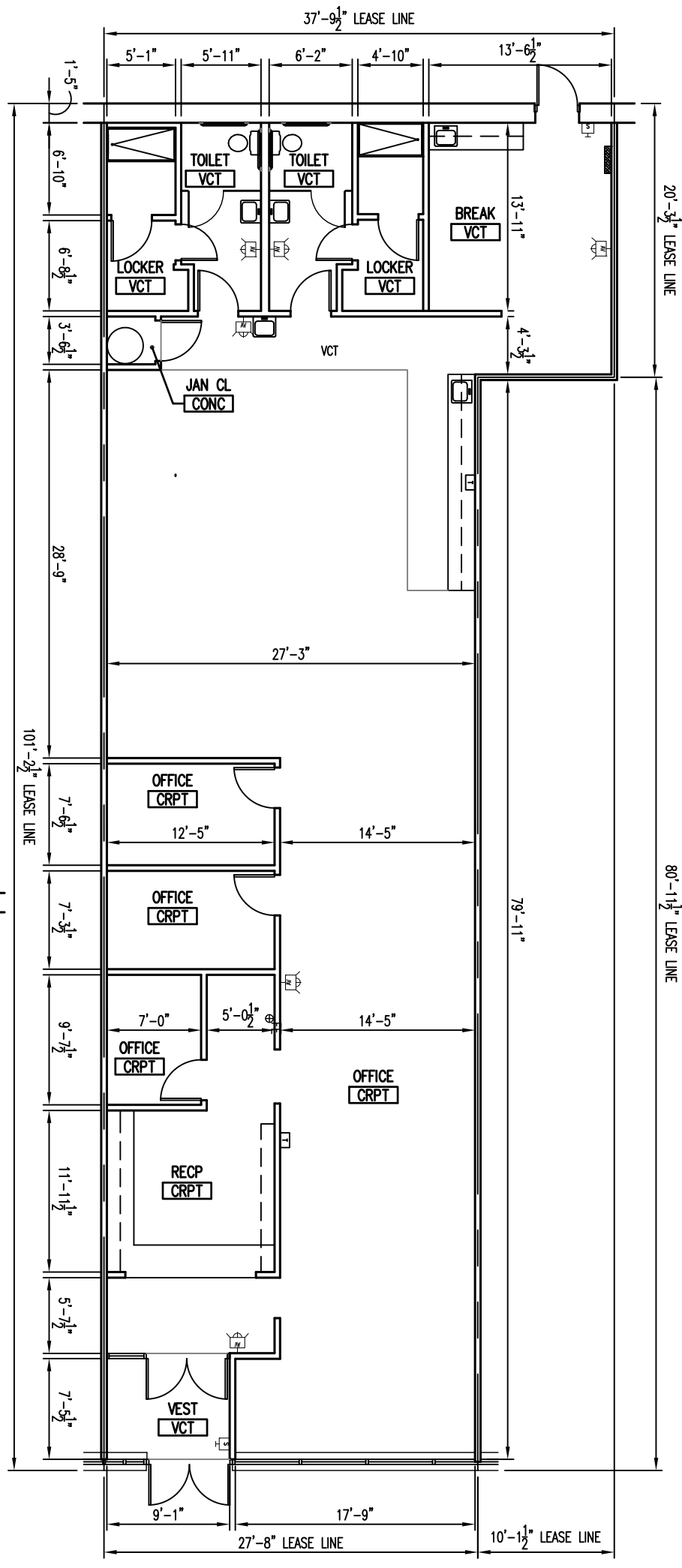
TOILETS/LOCKER (PRE-2010 ADA):
 2x4 RECESSED
 FLUORESCENT FIXTURES
 2x4 CEILING TILE & GRID
 LAVATORY
 WATER CLOSET
 SHOWERS
 COMBO LIGHT/EXHAUST FAN
FINISHES:
 PAINT & VINYL BASE

ELECTRICAL
 200A 120/208V, 3Ø
 4W 42 BRKR PANEL

WATER SERVICE 1 1/4"Ø MIN.



CEILING PLAN
 SCALE: 3/32" = 1'-0"



FLOOR PLAN
 SCALE: 3/32" = 1'-0"

LEGEND

	FLUORESCENT LIGHT FIXTURE		SPRINKLER HEAD
	BATTERY PACK EMERGENCY FIXTURE		THERMOSTAT
	EXIT SIGN		POWER PANEL
	TOILET EXHAUST FAN		DIFFUSER / REGISTER
	DOWNLIGHT FIXTURE		F.A. DEVICES

