

NORTH AURORA TOWN CENTER
 1862 TOWN CENTER DRIVE
 NORTH AURORA, IL 60542
 SQUARE FOOTAGE: 4,182
 UNIT 14

EXISTING CONSTRUCTION

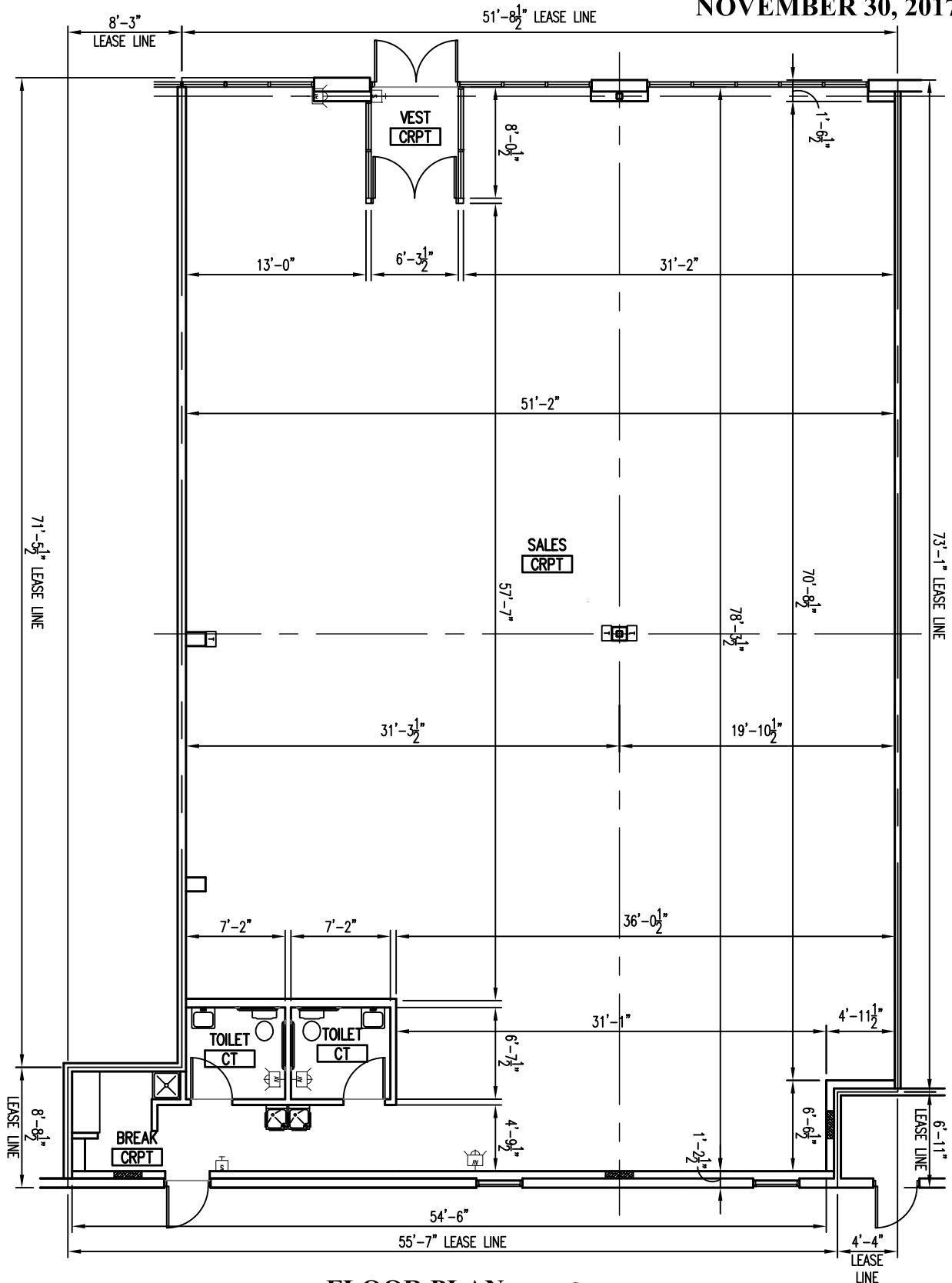
FRONT: ALUM. STOREFRONT ASSEMBLY
 (1" INSUL. GLASS) / GYP. BD.
 ON MTL. FRAMING OVER MASONRY
 SIDES: 1 HR. GYP. BD. DEMISING WALL
 REAR: GYP. BD. ON MTL. FRAMING OVER
 MASONRY

SALES:
 OUTLETS & TELE/DATA
 (MISC. LOCATIONS)
 RECESSED 2x4 & 1x4 WALL WASH
 FLUORESCENT FIXTURES
 2x4 CEILING TILE & GRID
 FINISHES:
 PAINT, WD TRIM & VINYL BASE

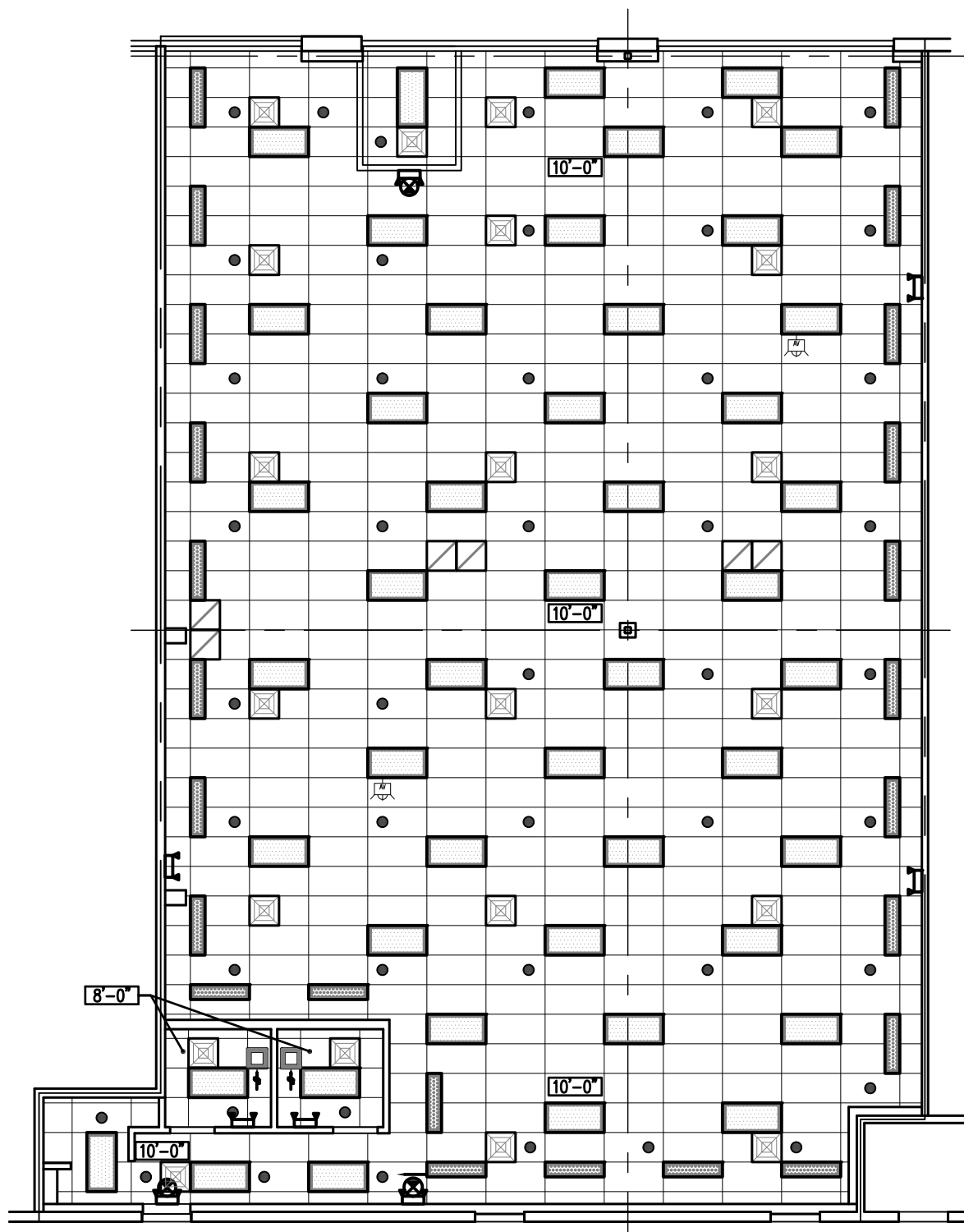
TOILETS (2010-ADA):
 2x4 CEILING TILE & GRID
 RECESSED 2x4 FLUORESCENT FIXTURE
 LAVATORY
 WATER CLOSET
 EXHAUST FAN
 FINISHES:
 PAINT, CT WAINSCOT & CT BASE

ELECTRICAL
 (3)200A 120/208V, 3Ø 4W 42 CKT
 PANELS (3 SEPARATE METERS)

WATER SERVICE: 1"Ø



FLOOR PLAN
 SCALE: 3/32" = 1'-0"



CEILING PLAN
 SCALE: 3/32" = 1'-0"

LEGEND

	FLUORESCENT LIGHT FIXTURE		SPRINKLER HEAD
	BATTERY PACK EMERGENCY FIXTURE		THERMOSTAT
	EXIT SIGN		POWER PANEL
	TOILET EXHAUST FAN		DIFFUSER / REGISTER
	DOWNLIGHT FIXTURE		F.A. DEVICES

GRAPHIC SCALE

