

## Quarry Retail

1582 New Brighton Blvd  
N. E. Minneapolis, MN

Landlord  
Recorded Floor Area: 1,296 Sq. Ft.

PMA  
Measured Floor Area: 1,119 Sq. Ft.

### EXISTING CONDITIONS

**FRONT WALL**  
GLASS STOREFRONT / CMU

**SIDE WALL**  
GYPSUM BOARD ON METAL FRAMING  
OVER CMU

**DEMISING WALLS**  
GYPSUM BOARD ON 6" METAL STUDS

**INTERIOR WALLS**  
GYPSUM BOARD ON METAL STUDS

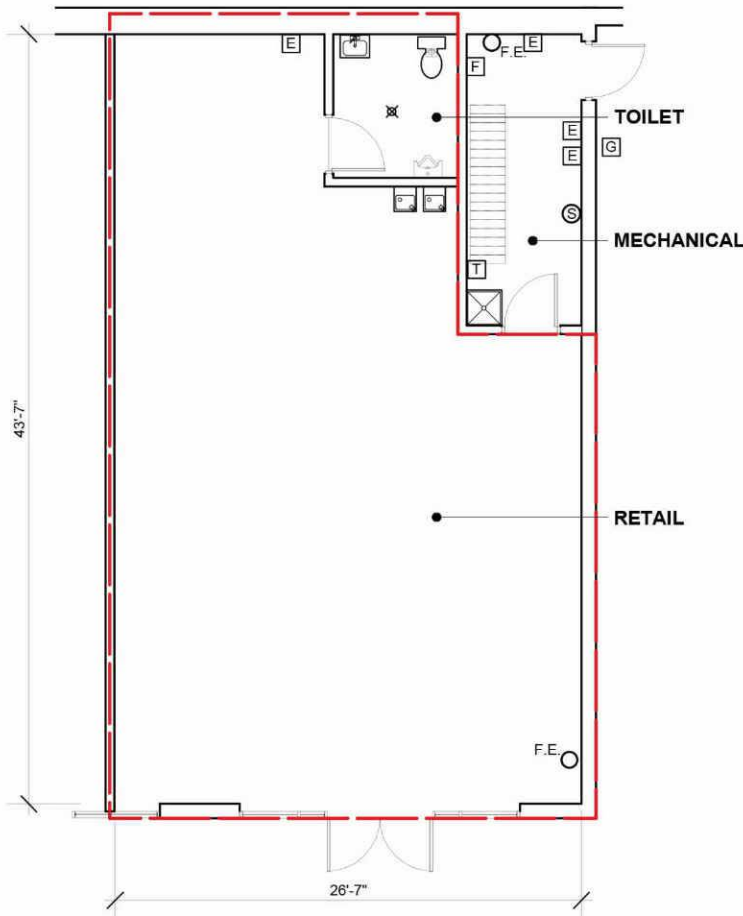
**CLEAR HEIGHT**  
14'-0" +/- TO UNDERSIDE OF BAR JOISTS

**RETAIL**  
FLOOR: CONCRETE  
WALLS: PAINTED GYPSUM BOARD  
CEILING: EXPOSED STRUCTURE

**MECHANICAL**  
FLOOR: CONCRETE  
WALLS: GYPSUM BOARD  
CEILING: EXPOSED STRUCTURE

**TOILET**  
FLOOR: 8" x 8" C.T. WITH C.T. BASE  
WALLS: FRP BOARD TO 4'-0"  
PAINTED GYPSUM BOARD  
CEILING: GYPSUM BOARD 8'-0" A.F.F.

**EXISTING SYSTEMS**  
HVAC: ROOFTOP UNIT  
WATER HEATER: 5 GAL ELECT.  
SERVICE SINK  
FIRE SPRINKLERS  
ELECTRICAL: 42 BREAKER PANEL  
ELECTRICAL OUTLETS



Existing Floor Plan



15650 36th Ave. No. Suite 170  
Plymouth, Minnesota 55446  
763-557-9081 F 763-557-9233

**LEASING INQUIRIES**  
**PHONE: 877.206.5656**

EMAIL: [LEASING@IRCRETAILCENTERS.COM](mailto:LEASING@IRCRETAILCENTERS.COM)  
[IRCRETAILCENTERS.COM](http://IRCRETAILCENTERS.COM)