

**LOCATION**

1412 S. MILWAUKEE AVE.,  
LIBERTYVILLE, IL. 60048  
GROSS S.F. : 1,200

**EXISTING CONSTRUCTION**

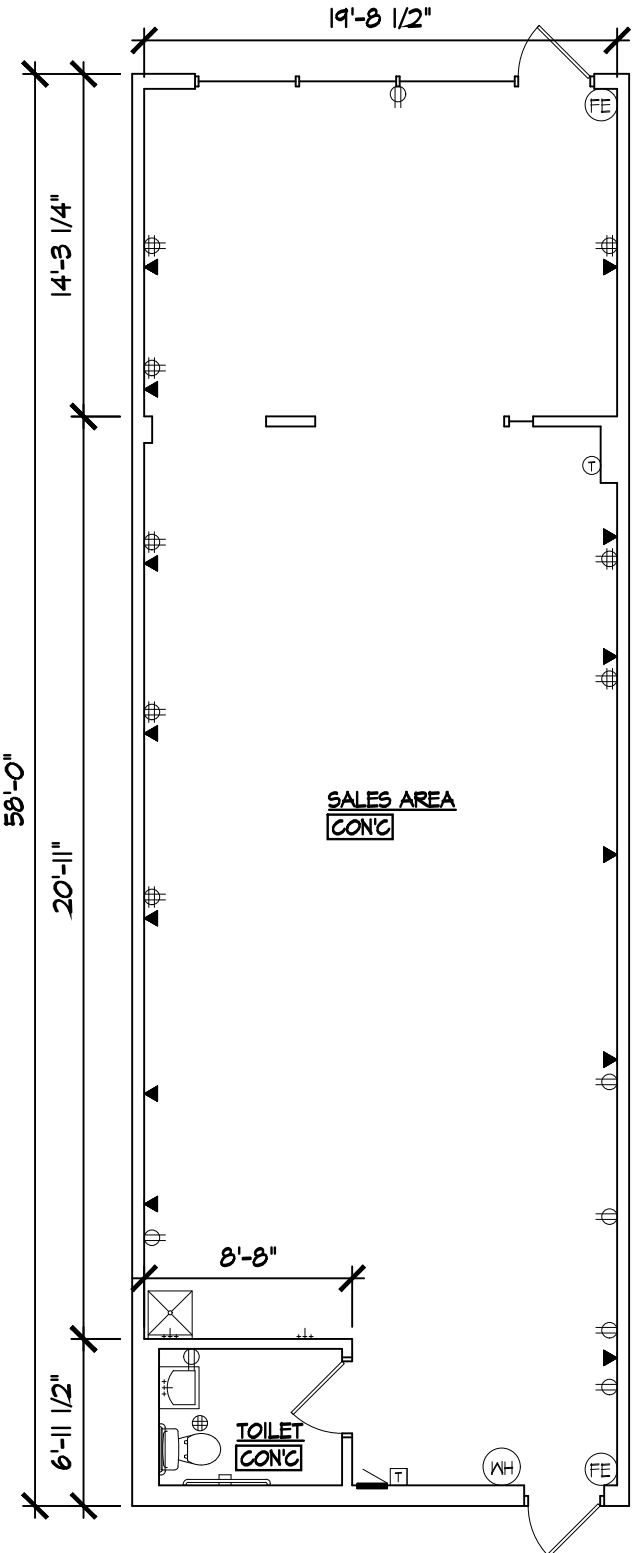
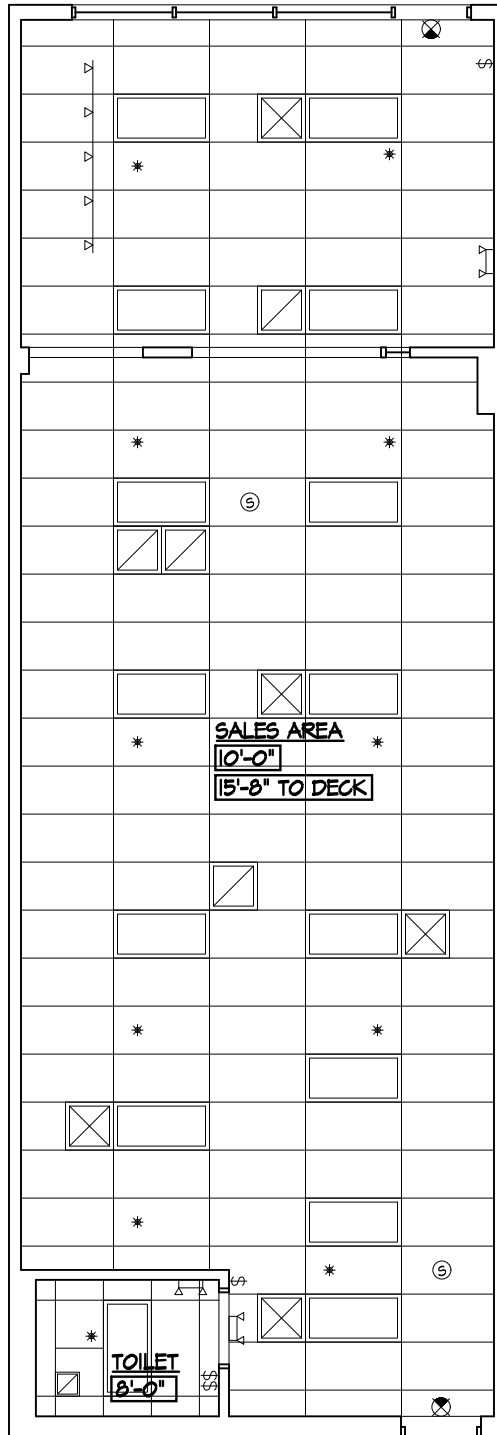
**FRONT WALL**  
ALUM. STOREFRONT ASSEMBLY

**REAR WALL**  
CMU WALL

**SIDE WALLS**  
GYP. BD. DEMISING WALLS

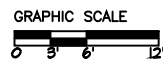
**SALES AREA**  
OUTLETS (MISC. LOCATIONS)  
2x4 LIGHT FIXTURES  
2x4 LAY-IN CEILING TILE & GRID  
WALL FINISH: PAINT

**TOILETS**  
OUTLETS (MISC. LOCATIONS)  
FAN AND 2x4 LIGHT FIXTURE  
2x4 LAY-IN CEILING TILE & GRID  
WALL FINISH: PAINT W/ VINYL BASE



**LEGEND**

⊖	WALL OUTLET	⊖	FLOOR/CLS OUTLET
\$	LIGHT SWITCH	⊕	FLOOR DRAIN
⊠	FIRE ALARM FULL STATION	—	6x4 LINEAR LIGHT FIXTURE
⊙	SPEAKER	⊕	HEAT / SMOKE DETECTOR
△	TRACK LIGHT	⊠	SECURITY CAMERA
⊠	TOILET EXH. FAN	⊕	THERMOSTAT
□	2x4 FLUORESCENT LIGHT FIXTURE	⊠	POWER PANEL
⊕	PENDANT LIGHT FIXTURE	⊠	DIFFUSER / REGISTER
⊠	EXIT SIGN	⊠	AUDIO / VISUAL ALARM SYSTEM
⊠	BATTERY PACK EMERGENCY FIXTURE	*	SPRINKLER
⊕	FIRE EXTINGUISHER	T	TIMER



NOVEMBER 21, 2018

**CEILING PLAN**

SCALE: 1/8" = 1'-0"



**FLOOR PLAN**

SCALE: 1/8" = 1'-0"

