

THATCHER WOODS
 3049 N. THATCHER AVE.
 RIVER GROVE, IL 60171
 SQUARE FOOTAGE: 1,166
 UNIT 05

EXISTING CONSTRUCTION

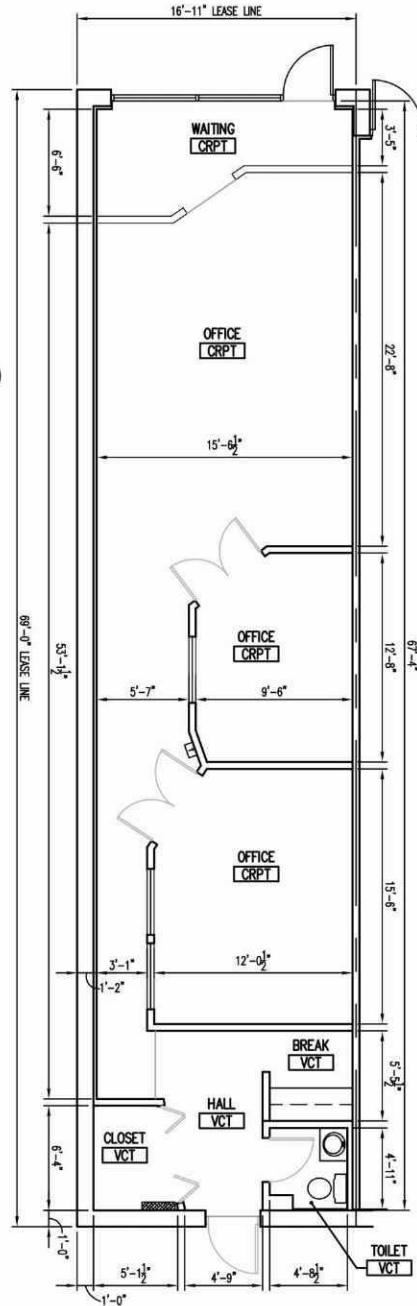
FRONT: ALUM. STOREFRONT ASSEMBLY
 (1/4" GLASS)/GYP. BD. ON MTL.
 FRAMING OVER MASONRY
 SIDES: 1 HR. GYP. BD. DEMISING
 WALL/GYP. BD. ON MTL.
 FRAMING OVER MASONRY
 REAR: PAINTED MASONRY

OFFICES/BREAK:
 OUTLETS & TELE/DATA (MISC. LOCATIONS)
 RECESSED CAN - CFL
 2x2 CEILING TILE & GRID
 FINISHES:
 PAINT & VINYL BASE

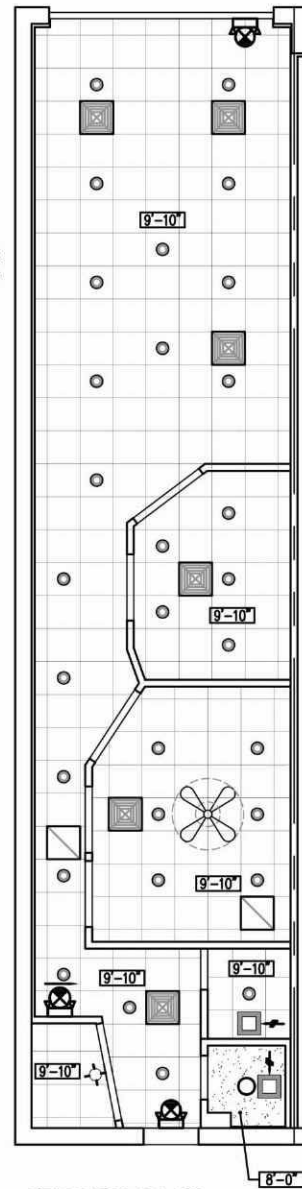
TOILET (NON-ADA):
 GYP. BD. CEILING
 SURFACE MTD. LIGHT
 LAVATORY W/BASE CABINET
 WATER CLOSET
 EXHAUST FAN
 FINISHES:
 PAINT & VINYL BASE

ELECTRICAL
 200A 120/208V, 3Ø
 4W 42 BRKR PANEL

WATER SERVICE 3/4"Ø MIN.



FLOOR PLAN
 SCALE: 1/8" = 1'-0"



CEILING PLAN
 SCALE: 1/8" = 1'-0"

LEGEND

	DOWNLIGHT FEATURE		SPRINKLER HEAD
	BATTERY PACK		THERMOSTAT
	EMERGENCY FEATURE		POWER PANEL
	EXIT SIGN		TOILET EXHAUST FAN
	TOILET EXHAUST FAN		DIFFUSER / REGISTER



LEASE LINE PER BOMA Z65.5-2010

LEASING INQUIRIES
PHONE: 877.206.5656
 EMAIL: LEASING@IRCRETAILCENTERS.COM
 IRCRETAILCENTERS.COM