



THATCHER WOODS
 3153 THATCHER AVE.
 RIVER GROVE, IL 60171
 SQUARE FOOTAGE: 1,737
 UNIT 13

EXISTING CONSTRUCTION

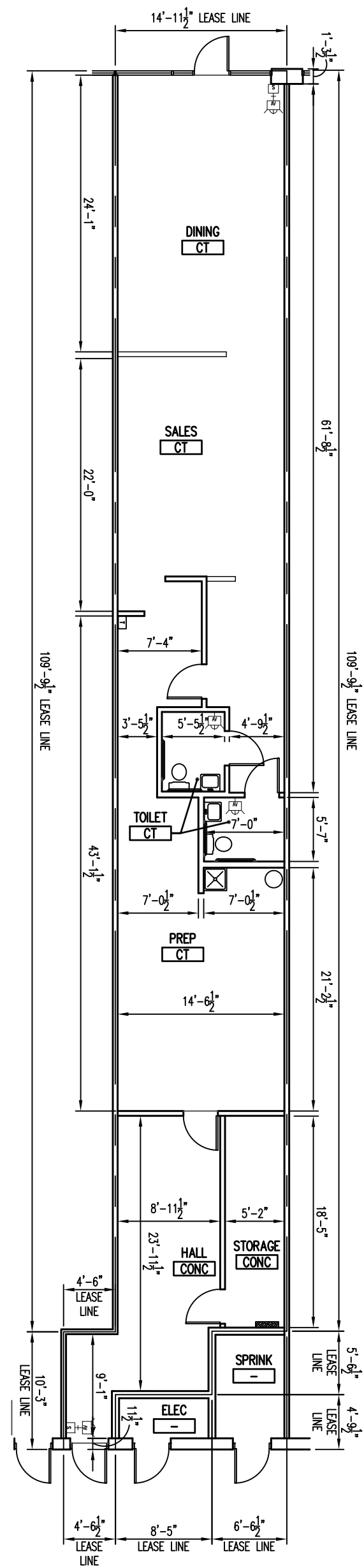
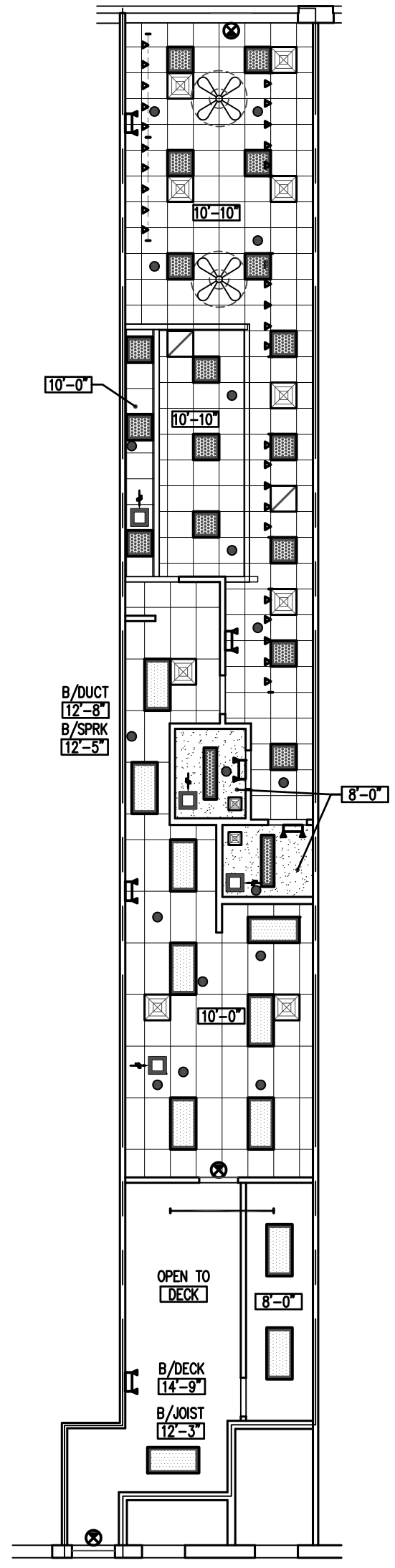
FRONT: ALUM. STOREFRONT ASSEMBLY
 (1/4" GLASS) / GYP. BD.
 ON MTL. FRAMING ON MASONRY
 SIDES: 1 HR. GYP. BD. DEMISING WALL
 REAR: EXPOSED CMU / 1 HR. GYP. BD.
 DEMISING WALL

DINING/PREP/STORAGE:
 OUTLETS & TELE/DATA
 (MISC. LOCATIONS)
 RECESSED 2x2 & 2x4 FLUORESCENT
 TRACK LIGHTING
 2x2 & 2x4 CEILING TILE & GRID
 FINISHES:
 PAINT, FRP, WD CROWN, WD
 CHAIR RAIL & CT BASE

TOILETS (PRE-2010-ADA):
 GYP. BD. CEILING
 SURFACE MTD. FLUORESCENT FIXTURE
 LAVATORY
 WATER CLOSET
 EXHAUST FAN
 FINISHES:
 CERAMIC TILE & CT BASE

ELECTRICAL
 200A 120/208V,
 3Ø 4W 42 CKT PANEL

WATER SERVICE: 1"Ø MIN.



LEGEND

	FLUORESCENT LIGHT FIXTURE		SPRINKLER HEAD
	BATTERY PACK EMERGENCY FIXTURE		THERMOSTAT
	EXIT SIGN		POWER PANEL
	TOILET EXHAUST FAN		DIFFUSER / REGISTER
	DOWNLIGHT FIXTURE		F.A. DEVICES

