

LOCATION

1410 S. MILWAUKEE AVE.,
LIBERTYVILLE, IL. 60048
GROSS S.F. : 1,200

EXISTING CONSTRUCTION

FRONT WALL
ALUM. STOREFRONT ASSEMBLY

REAR WALL
GYP. BD. FURRING OVER CMU WALL

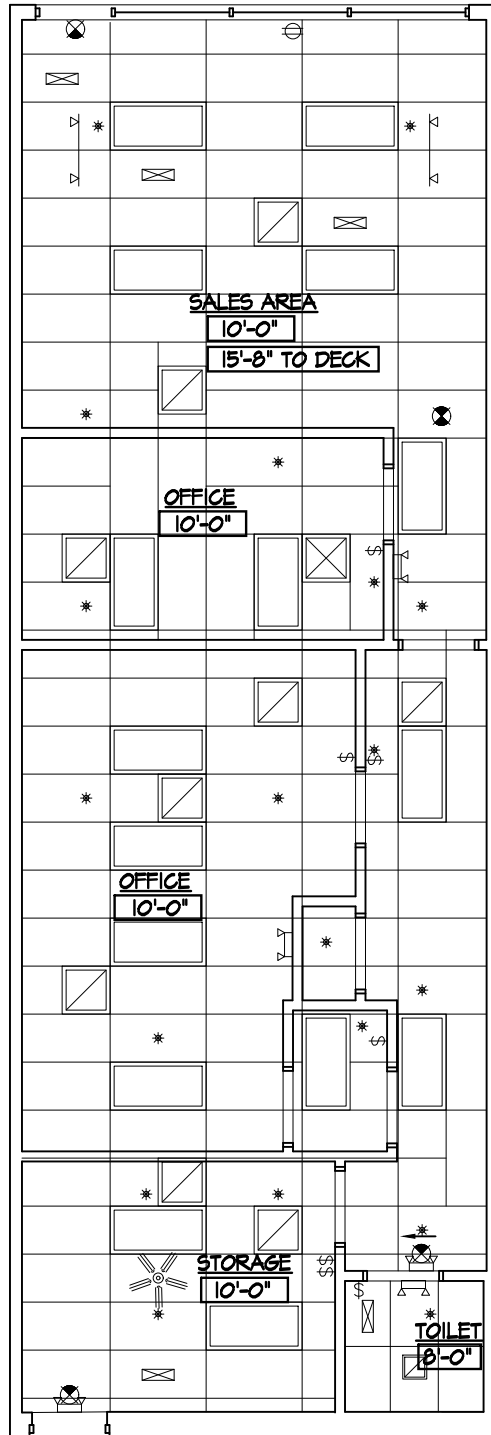
SIDE WALLS
GYP. BD. DEMISING WALLS

SALES AREA
OUTLETS (MISC. LOCATIONS)
2x4 LIGHT FIXTURES
2x4 LAY-IN CEILING TILE & GRID
WALL FINISH: PAINT

OFFICE AREA
OUTLETS (MISC. LOCATIONS)
2x4 LIGHT FIXTURES
2x4 LAY-IN CEILING TILE & GRID
WALL FINISH: PAINT

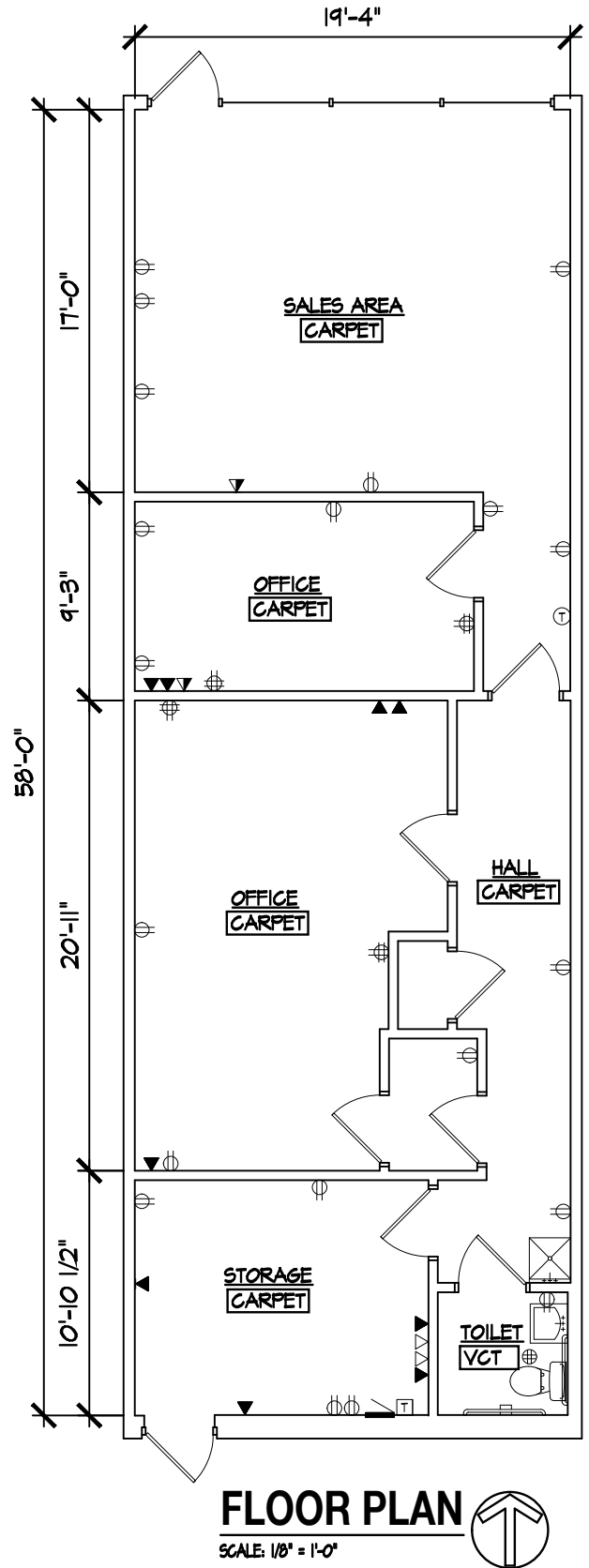
TOILETS
OUTLETS (MISC. LOCATIONS)
FAN AND 2x4 LIGHT FIXTURE
2x4 LAY-IN CEILING TILE & GRID
WALL FINISH: PAINT W/ VINYL BASE

STORAGE
OUTLETS (MISC. LOCATIONS)
2x4 LIGHT FIXTURES
OPEN CEILING
WALL FINISH: GYP. BOARD
200A PANEL : 240V, 3φ, 4W



CEILING PLAN

SCALE: 1/8" = 1'-0"



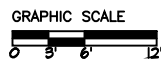
FLOOR PLAN

SCALE: 1/8" = 1'-0"



LEGEND

⊖	WALL OUTLET	⊖	FLOOR/CLS OUTLET
\$	LIGHT SWITCH	⊕	FLOOR DRAIN
⊠	FIRE ALARM PULL STATION	⊠	1x4 LINEAR LIGHT FIXTURE
⊙	SPEAKER	⊙	HEAT / SMOKE DETECTOR
⚡	TRACK LIGHT	⊠	SECURITY CAMERA
⊠	TOILET EXH. FAN	⊕	THERMOSTAT
⊠	2x4 FLUORESCENT LIGHT FIXTURE	⊠	POWER PANEL
⊕	PENDANT LIGHT FIXTURE	⊠	DIFFUSER / REGISTER
⊠	EXIT SIGN	⊠	AUDIO / VISUAL ALARM SYSTEM
⊠	BATTERY PACK EMERGENCY FIXTURE	*	SPRINKLER
⊠	FIRE EXTINGUISHER	T	TIMER



NOVEMBER 21, 2018