



NORTH AURORA TOWNE CENTER
 1830 TOWNE CENTER DR
 NORTH AURORA, IL 60542
 SQUARE FOOTAGE: ±30,000
 UNIT 11

EXISTING CONSTRUCTION

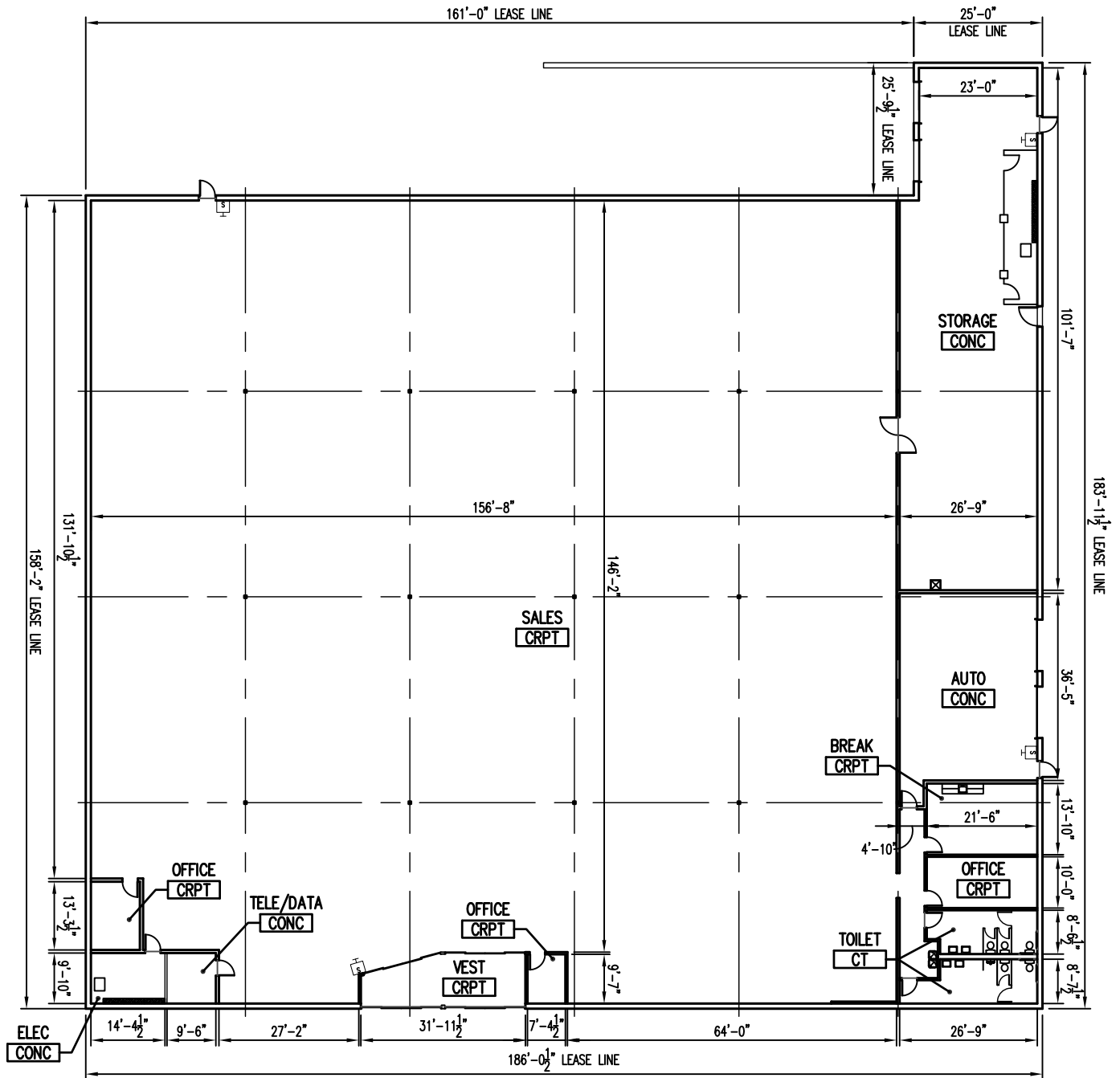
FRONT: ALUM. STOREFRONT ASSEMBLY
 (1" GLASS) / PAINTED CMU
 SIDES: PAINTED CMU
 REAR: PAINTED CMU

SALES/OFFICES/STORAGE:
 OUTLETS & TELE/DATA
 (MISC. LOCATIONS)
 1x8 STRIP, HIGH BAY & RECESSED 2x4
 FLUORESCENT FIXTURES
 2x4 CEILING TILE & GRID
 PAINTED CEILING DECK
 FINISHES:
 PAINT & VINYL BASE

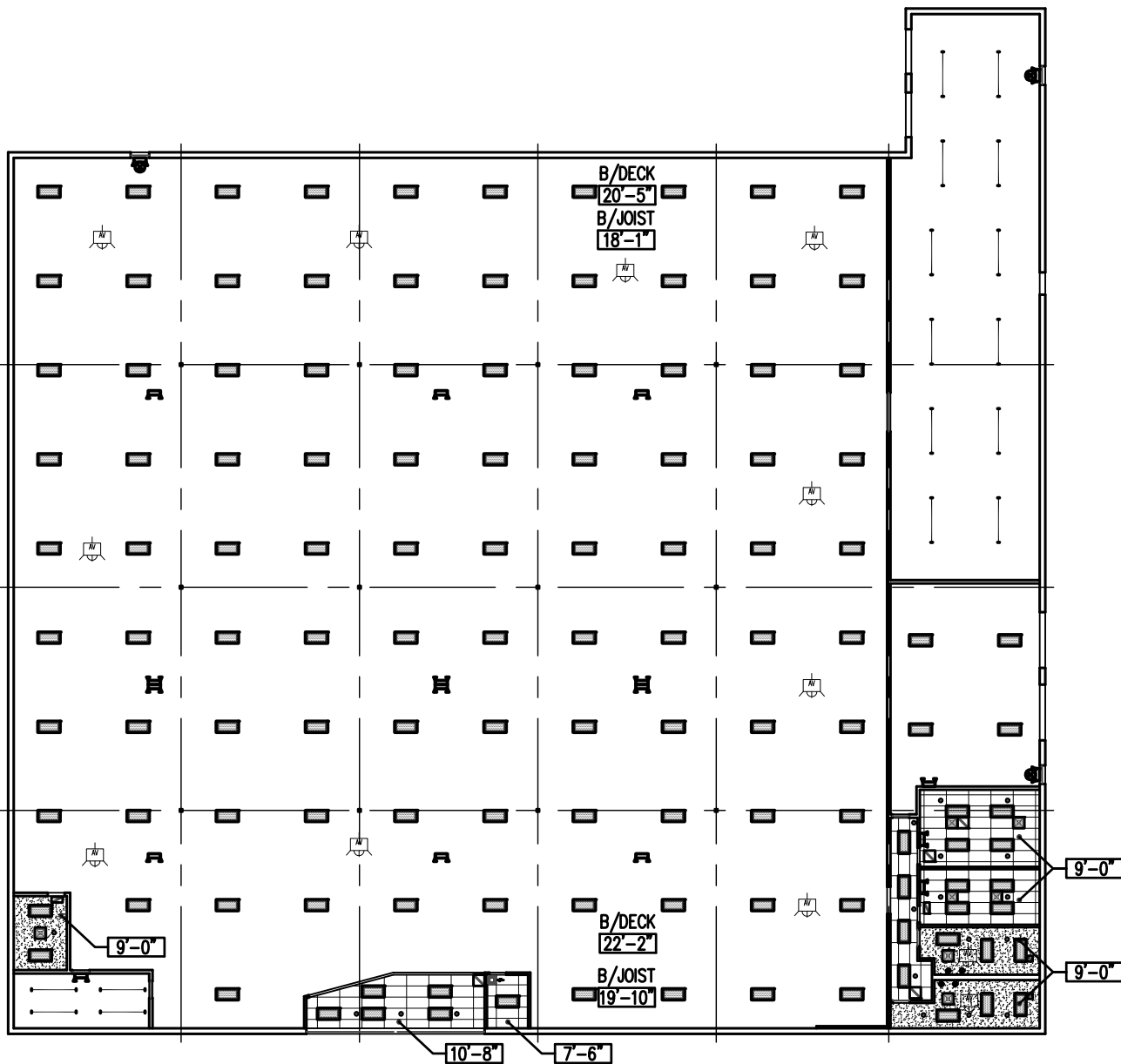
TOILETS (PRE-2010-ADA):
 GYP. BD.
 2x4 RECESSED FLUORESCENT FIXTURE
 PENDANT LIGHTS
 LAVATORIES / URINAL
 WATER CLOSETS
 EXHAUST FAN
 FINISHES:
 PAINT, CT WAINSCOT & CT BASE

ELECTRICAL
 800A 277/480V, 3Ø 4W 30 MAIN
 277/480V POWER WALL (MULTIPLE PANELS)
 600A 120/208V, 3Ø 4W 30 SUB-MAIN
 120/208V POWER WALL (MULTIPLE PANELS)

WATER SERVICE: 2"Ø



FLOOR PLAN
 SCALE: 1" = 30'-0"



CEILING PLAN
 SCALE: 1" = 30'-0"

LEGEND

	FLUORESCENT LIGHT FIXTURE		SPRINKLER HEAD
	BATTERY PACK EMERGENCY FIXTURE		THERMOSTAT
	EXIT SIGN		POWER PANEL
	TOILET EXHAUST FAN		DIFFUSER / REGISTER
	DOWNLIGHT FIXTURE		F.A. DEVICES

