



RetailCenters

RED TOP PLAZA

1428 S. MILWAUKEE AVE.
LIBERTYVILLE, IL 60048
SQUARE FOOTAGE: ±1,600
UNIT 29

EXISTING CONSTRUCTION

FRONT/SIDE: ALUM. STOREFRONT ASSEMBLY (1/4" GLAZING) / EXPOSED MASONRY
SIDE: 1 HR. GYP. BD. DEMISING WALL
REAR: GYP. BD. ON MTL. FRAMING OVER MASONRY WALL

DINING/KITCHEN/PREP:

OUTLETS & TELE/DATA (MISC. LOCATIONS)
2x2 RECESSED FLUORESCENT TRACK & PENDANT FIXTURES
2x2 CEILING TILE & GRID (GOLD GRID IN DINING AREA)
FINISHES: PAINT, WALL PAPER, WD CHAIR RAIL, FRP & CT BASE

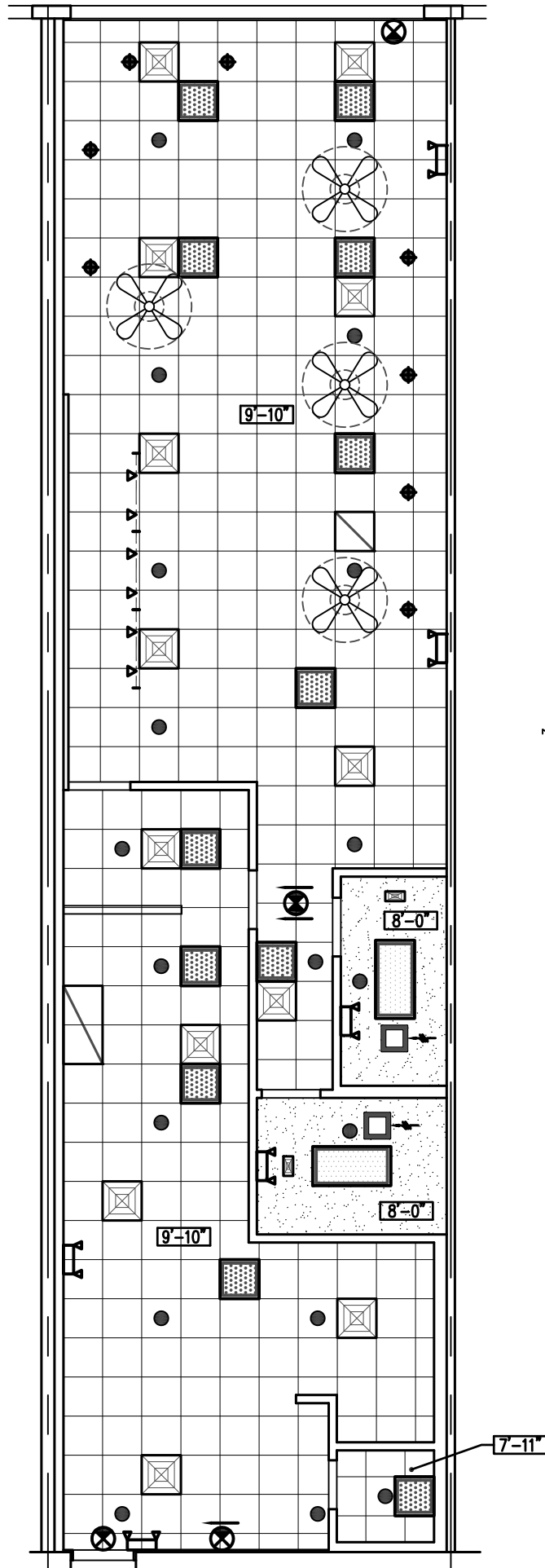
TOILETS (PRE-2010 ADA):

GYP. BD. CEILING
2x4 RECESSED FLUORESCENT FIXTURE
LAVATORY / WATER CLOSET
EXHAUST FAN
FINISHES: CT WALLS

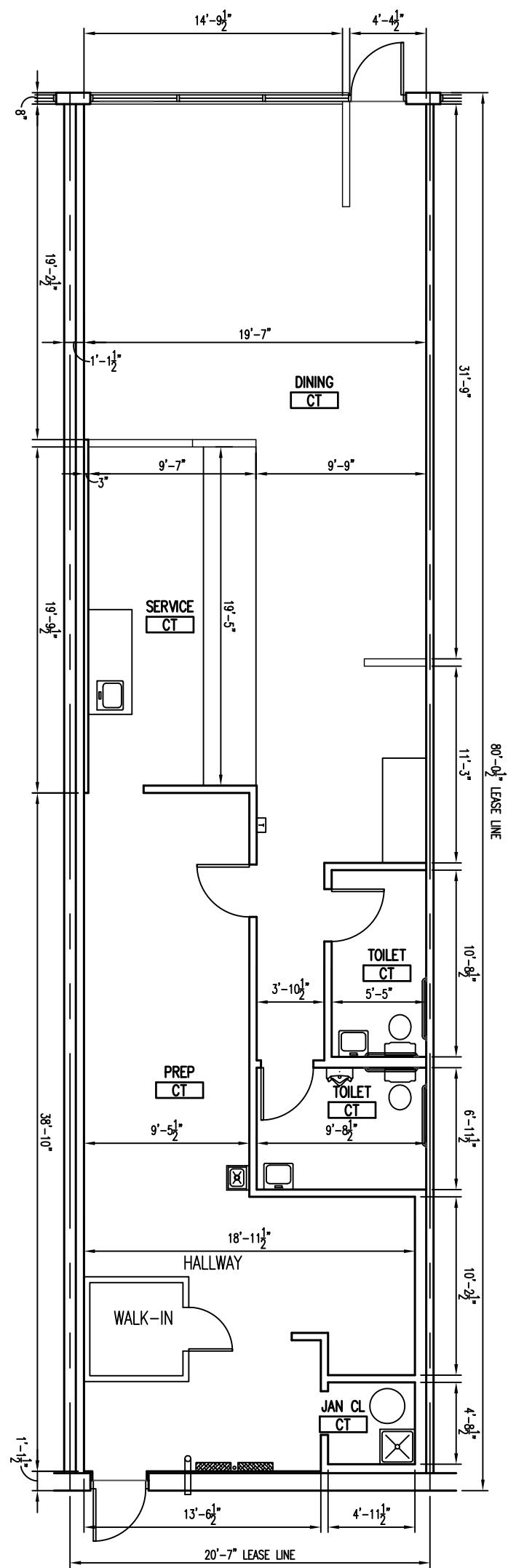
ELECTRICAL

200A 120/208V, 3Ø 4W 30 BRKR PANEL
50A 120/208V, 3Ø 42 10 BRKR SUB-PANEL

WATER SERVICE 1"Ø MIN.



CEILING PLAN
SCALE: 1/8" = 1'-0"



FLOOR PLAN
SCALE: 1/8" = 1'-0"

LEGEND			
	FLUORESCENT LIGHT FIXTURE		SPRINKLER HEAD
	BATTERY PACK EMERGENCY FIXTURE		THERMOSTAT
	EXIT SIGN		POWER PANEL
	TOILET EXHAUST FAN		DIFFUSER / REGISTER
	DOWNLIGHT FIXTURE		F.A. DEVICES

