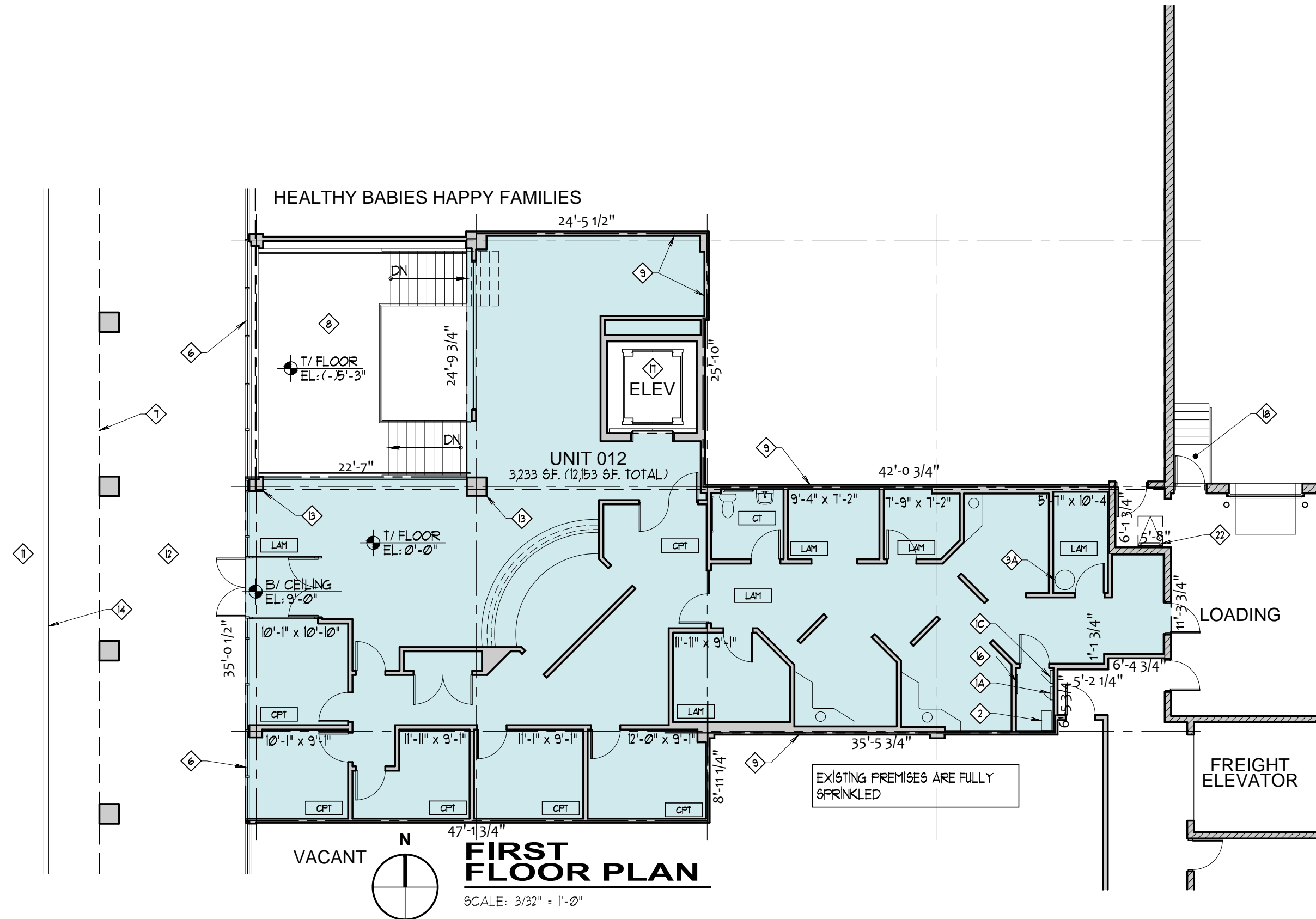
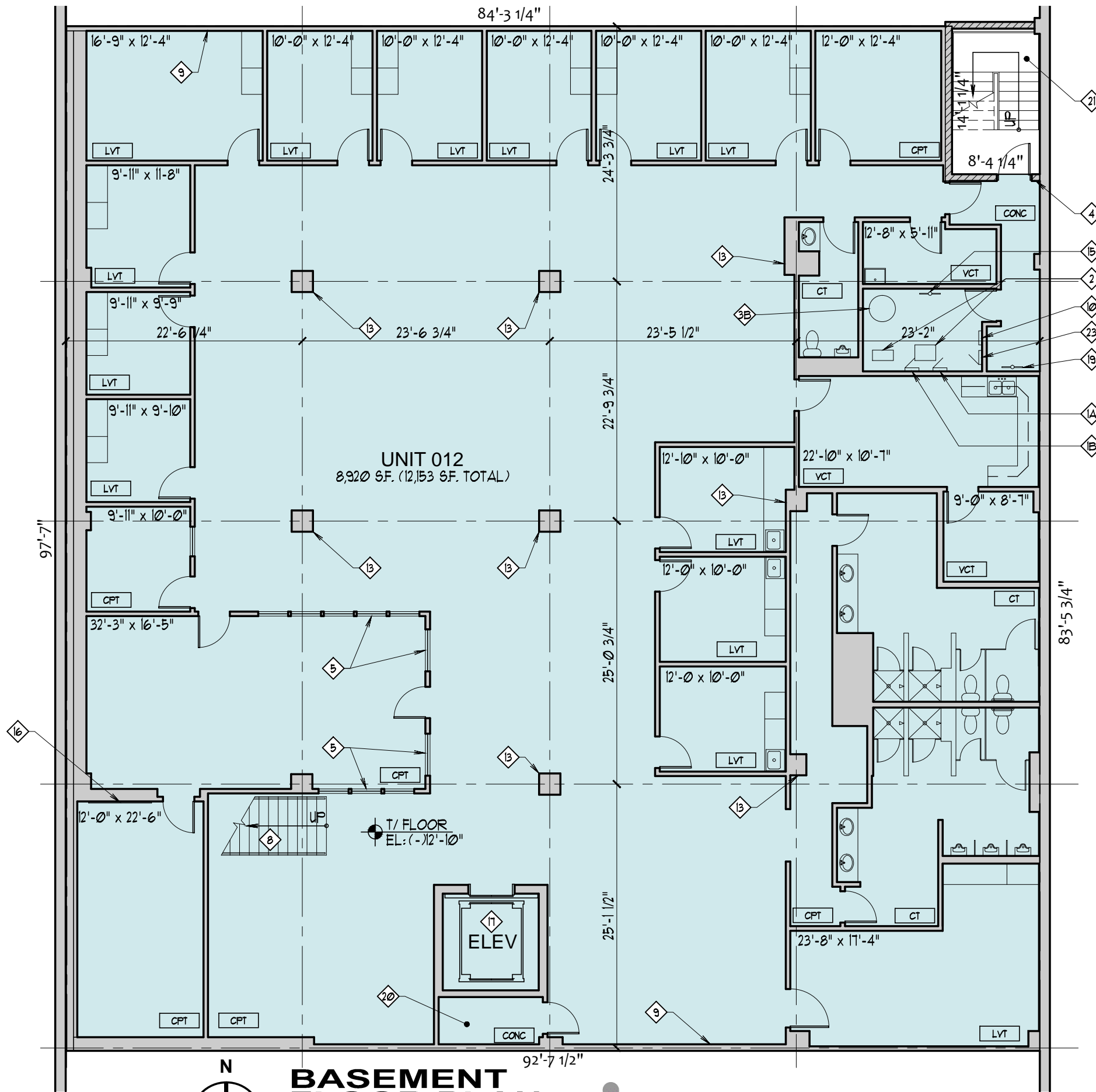


FLOOR PLAN KEY NOTES:

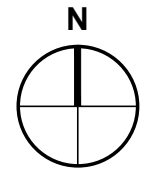
- 1A 225A 120/208V ELEC. PANEL
- 1B 200A 120/208V ELEC. PANEL
- 1C 100A 120/208V ELEC. PANEL
- 2 75KVA STEPDOWN TRANSFORMER
- 3A 50 GALLON WATER HEATER
- 3B WATER HEATER (CAPACITY UNKNOWN)
- 4 EXPOSED CMU WALL
- 5 FIXED INTERIOR WINDOW
- 6 ALUM. FRAMED STOREFRONT SYSTEM w/ 1/4" TH. CLEAR GLAZING
- 7 LINE OF CANOPY OVERHEAD
- 8 INTERIOR STAIR & LANDING
- 9 GYPSUM DEMISING WALL
- 10 ELECTRIC METER
- 11 ASPHALT DRIVE
- 12 CONCRETE SIDEWALK
- 13 STEEL COLUMN w/ DRYWALL SURROUND
- 14 CONCRETE CURB
- 15 WATER METER
- 16 TELE/DATA BACKBOARD
- 17 3200 LB. CAPACITY PASSENGER ELEVATOR
- 18 EXTERIOR CONCRETE STAIR
- 19 BACKFLOW PREVENTER & WATER METER
- 20 ELEVATOR MACHINE ROOM
- 21 EXIT STAIR
- 22 ROOF ACCESS LADDER
- 23 ELECTRICAL SERVICE DISCONNECT





- FLOOR PLAN KEY NOTES:**
- 1A 225A 120/208V ELEC. PANEL
 - 1B 200A 120/208V ELEC. PANEL
 - 1C 100A 120/208V ELEC. PANEL
 - 2 75KVA STEPDOWN TRANSFORMER
 - 3A 50 GALLON WATER HEATER
 - 3B WATER HEATER (CAPACITY UNKNOWN)
 - 4 EXPOSED CMU WALL
 - 5 FIXED INTERIOR WINDOW
 - 6 ALUM. FRAMED STOREFRONT SYSTEM w/ 1/4\"/>

As-Built Plans - Unit 012
 Four Flags
 8269 W. Golf Road - Niles, IL 60714



BASEMENT FLOOR PLAN

SCALE: 3/32" = 1'-0"

01/28/2019



charles vincent george
 ARCHITECTS
 1245 E. Diehl Rd. Suite 101 • Naperville, IL 60563
 P: 630.357.2023 • F: 630.357.2662